



Commonwealth of Kentucky

County Election Planning Report

County Name	
JESSAMINE COUNTY	
Election	
2023 GENERAL ELECTION	
Person Completing this Form	
Name	JOHNNY M. COLLIER
Title	JESSAMINE COUNTY CLERK
Phone	859-885-4161 EXT 7400

For in-person voting on Election Day, the County Board of Elections will (check one):

- Consolidate precincts and precinct election officers (Requires Form SBE 74);
- Utilize the same consolidation plan that was used in a previous election (Requires previous Form SBE 74); or
- Open all existing precincts.

Excused in-person absentee voting will occur (check one):

- Within the County Clerk's office; or
- In another location within the county (Requires Form SBE 74).

No-excuse in-person absentee voting will occur (check one):

- Within the County Clerk's office; or
- In another location within the county (Requires Form SBE 74).

Absentee ballot drop-boxes will be located (minimum of one location required):

INSIDE THE COURTHOUSE AT 101 NORTH MAIN ST, NICH, KY 40356

I have attached:

- All required Form SBE 74 sheets
- Relevant Maps
- Supplemental Narrative


Signature Date 8/2/2023

SUPPLEMENTAL NARRATIVE – 8/2/2023

2023 GENERAL ELECTION

Our Excused In-Person Absentee voting and the No-Excuse Early In-Person voting is conducted within the same address as the County Clerk's Office at 101 North Main Street, Nicholasville, KY 40356. The voting will be conducted in the Old Fiscal Courtroom. We will use our own deputies to conduct the Excused In-Person voting, but for the Early Voting we will use Precinct Workers. We will have 2 Verity Scanners, 2 Verity Printers, and 1 Verity ADA/DUO for the Excused Voting and for the Early Voting.



Commonwealth of Kentucky

Petition to Consolidate Precincts and Precinct Election Officers

County Name	
JESSAMINE COUNTY	
Election	Dates of Voting
2023 GENERAL	11-7-2023
Person Completing this Form	
Name	JOHNNY M. COLLIER
Title	JESSAMINE COUNTY CLERK
About Voting Location	
<i>Example: Tulip Poplar High, 123 Main Street, County High School</i>	
Name	WEST JESSAMINE MIDDLE SCHOOL
Address	1400 WILMORE RD, NICH, KY 40356
Type	CAFETERIA
Number of Parking Spaces	Sufficient Parking Spaces?
60	YES
Voting Equipment to be Used	
Number	Type of equipment
2	VERITY SCANNERS
2	VERITY PRINTERS
1	VERITY ADA/DUO

Precincts in Voting Location	
Precinct name	Number of registered voters
ALL	41,493

Narrative Plan <i>(please attach additional sheets if needed)</i>
1.) Why is this consolidation of these precincts desirable? <input checked="" type="checkbox"/> This is the same plan used in the last election <p>TO CONSOLIDATE OUR PRECINCTS WOULD ALLOW US TO USE LESS PRECINCT OFFICERS THAN IN THE PAST. LESS STAFF IS USED TO PREPARE THE VOTE CENTERS. DUE TO THESE CONTRIBUTING FACTORS THE COST FOR FISCAL COURT IS MUCH LESS</p>
2.) In what manner will Precinct Officers be assigned? <input checked="" type="checkbox"/> This location will be fully staffed with election officials <p>WE WILL HAVE 4 ELECTION OFFICERS ALLOCATED TO EVERY E-POLL CHECK-IN STATION; WITH EACH CHECK-IN HAVING 2 DEMOCRATS AND 2 REPUBLICANS.</p>
3.) How will the voting location be publicized to voters? How will the location be noted as a "Vote Center?" <p>LOCAL NEWSPAPER, LOCAL RADIO, LOCAL TV NEWS STATIONS. EACH LOCATION WILL HAVE A "JESS. CO. VOTE CENTER" SIGN POSTED.</p>
4.) How will the voting location serve as a focal point to meet the needs of a diverse community? <p>TO MEET THE NEEDS OF AN EVER CHANGING AND GROWING COMMUNITY WE WANT TO USE VOTE CENTERS WHICH ARE STRATEGICALLY PLACED TO COVER THE NORTHERN, SOUTHERN, EASTERN, WESTERN, AND CENTRAL AREAS OF JESSAMINE COUNTY. VOTE CENTERS ACCOMMODATE THE VOTERS BY NOT LIMITING WHERE THEY CAN GO VOTE. IT MAKES IT MORE CONVENIENT TO THOSE WORKING WHO CAN VOTE CLOSEST TO THEIR DESTINATION.</p>



Commonwealth of Kentucky
Petition to Consolidate Precincts and Precinct Election Officers

County Name	
JESSAMINE COUNTY	
Election	Dates of Voting
2023 GENERAL	11-7-2023
Person Completing this Form	
Name	JOHNNY M. COLLIER
Title	JESSAMINE COUNTY CLERK
About Voting Location	
<i>Example: Tulip Poplar High, 123 Main Street, County High School</i>	
Name	EDGEWOOD BAPTIST CHURCH
Address	717 SOUTH MAIN ST, NICH, KY 40356
Type	2 LARGE SUNDAY SCHOOL ROOMS
Number of Parking Spaces	Sufficient Parking Spaces?
75	YES
Voting Equipment to be Used	
Number	Type of equipment
2	VERITY SCANNERS
2	VERITY PRINTERS
1	VERITY ADA/DUO

Precincts in Voting Location	
Precinct name	Number of registered voters
ALL	41,493

Narrative Plan <i>(please attach additional sheets if needed)</i>
1.) Why is this consolidation of these precincts desirable? <input checked="" type="checkbox"/> This is the same plan used in the last election TO CONSOLIDATE OUR PRECINCTS WOULD ALLOW US TO USE LESS PRECINCT OFFICERS THAN IN THE PAST. LESS STAFF IS USED TO PREPARE THE VOTE CENTERS. DUE TO THESE CONTRIBUTING FACTORS THE COST FOR FISCAL COURT IS MUCH LESS
2.) In what manner will Precinct Officers be assigned? <input checked="" type="checkbox"/> This location will be fully staffed with election officials WE WILL HAVE 4 ELECTION OFFICERS ALLOCATED TO EVERY E-POLL CHECK-IN STATION; WITH EACH CHECK-IN HAVING 2 DEMOCRATS AND 2 REPUBLICANS.
3.) How will the voting location be publicized to voters? How will the location be noted as a "Vote Center?" LOCAL NEWSPAPER, LOCAL RADIO, LOCAL TV NEWS STATIONS. EACH LOCATION WILL HAVE A "JESS. CO. VOTE CENTER" SIGN POSTED.
4.) How will the voting location serve as a focal point to meet the needs of a diverse community? TO MEET THE NEEDS OF AN EVER CHANGING AND GROWING COMMUNITY WE WANT TO USE VOTE CENTERS WHICH ARE STRATEGICALLY PLACED TO COVER THE NORTHERN, SOUTHERN, EASTERN, WESTERN, AND CENTRAL AREAS OF JESSAMINE COUNTY. VOTE CENTERS ACCOMMODATE THE VOTERS BY NOT LIMITING WHERE THEY CAN GO VOTE. IT MAKES IT MORE CONVENIENT TO THOSE WORKING WHO CAN VOTE CLOSEST TO THEIR DESTINATION.



Commonwealth of Kentucky

Petition to Consolidate Precincts and Precinct Election Officers

County Name	
JESSAMINE COUNTY	
Election	Dates of Voting
2023 GENERAL	11-7-2023
Person Completing this Form	
Name	JOHNNY M. COLLIER
Title	JESSAMINE COUNTY CLERK
About Voting Location	
<i>Example: Tulip Poplar High, 123 Main Street, County High School</i>	
Name	BETHEL CHRISTIAN CHURCH
Address	1991 PHILLIPS RD, NICH, KY 40356
Type	CHURCH FELLOWSHIP HALL
Number of Parking Spaces	Sufficient Parking Spaces?
50	YES
Voting Equipment to be Used	
Number	Type of equipment
2	VERITY SCANNERS
2	VERITY PRINTERS
1	VERITY ADA/DUO

Precincts in Voting Location	
Precinct name	Number of registered voters
ALL	41,493

Narrative Plan *(please attach additional sheets if needed)*

1.) Why is this consolidation of these precincts desirable?
 This is the same plan used in the last election

TO CONSOLIDATE OUR PRECINCTS WOULD ALLOW US TO USE LESS PRECINCT OFFICERS THAN IN THE PAST. LESS STAFF IS USED TO PREPARE THE VOTE CENTERS. DUE TO THESE CONTRIBUTING FACTORS THE COST FOR FISCAL COURT IS MUCH LESS

2.) In what manner will Precinct Officers be assigned?
 This location will be fully staffed with election officials

WE WILL HAVE 4 ELECTION OFFICERS ALLOCATED TO EVERY E-POLL CHECK-IN STATION; WITH EACH CHECK-IN HAVING 2 DEMOCRATS AND 2 REPUBLICANS.

3.) How will the voting location be publicized to voters? How will the location be noted as a "Vote Center?"

LOCAL NEWSPAPER, LOCAL RADIO, LOCAL TV NEWS STATIONS. EACH LOCATION WILL HAVE A "JESS. CO. VOTE CENTER" SIGN POSTED.

4.) How will the voting location serve as a focal point to meet the needs of a diverse community?

TO MEET THE NEEDS OF AN EVER CHANGING AND GROWING COMMUNITY WE WANT TO USE VOTE CENTERS WHICH ARE STRATEGICALLY PLACED TO COVER THE NORTHERN, SOUTHERN, EASTERN, WESTERN, AND CENTRAL AREAS OF JESSAMINE COUNTY. VOTE CENTERS ACCOMODATE THE VOTERS BY NOT LIMITING WHERE THEY CAN GO VOTE. IT MAKES IT MORE CONVENIENT TO THOSE WORKING WHO CAN VOTE CLOSEST TO THEIR DESTINATION.



Commonwealth of Kentucky

Petition to Consolidate Precincts and Precinct Election Officers

County Name	
JESSAMINE COUNTY	
Election	Dates of Voting
2023 GENERAL	11-7-2023
Person Completing this Form	
Name	JOHNNY M. COLLIER
Title	JESSAMINE COUNTY CLERK
About Voting Location	
<i>Example: Tulip Poplar High, 123 Main Street, County High School</i>	
Name	FAITH UNITED CHURCH
Address	3080 BRANNON RD, NICH, KY 40356
Type	CHURCH GYM
Number of Parking Spaces	Sufficient Parking Spaces?
40	YES
Voting Equipment to be Used	
Number	Type of equipment
2	VERITY SCANNERS
2	VERITY PRINTERS
1	VERITY ADA/DUO

Precincts in Voting Location	
Precinct name	Number of registered voters
ALL	41,493

Narrative Plan <i>(please attach additional sheets if needed)</i>
1.) Why is this consolidation of these precincts desirable?
<input checked="" type="checkbox"/> This is the same plan used in the last election
TO CONSOLIDATE OUR PRECINCTS WOULD ALLOW US TO USE LESS PRECINCT OFFICERS THAN IN THE PAST. LESS STAFF IS USED TO PREPARE THE VOTE CENTERS. DUE TO THESE CONTRIBUTING FACTORS THE COST FOR FISCAL COURT IS MUCH LESS
2.) In what manner will Precinct Officers be assigned?
<input checked="" type="checkbox"/> This location will be fully staffed with election officials
WE WILL HAVE 4 ELECTION OFFICERS ALLOCATED TO EVERY E-POLL CHECK-IN STATION; WITH EACH CHECK-IN HAVING 2 DEMOCRATS AND 2 REPUBLICANS.
3.) How will the voting location be publicized to voters? How will the location be noted as a "Vote Center?"
LOCAL NEWSPAPER, LOCAL RADIO, LOCAL TV NEWS STATIONS. EACH LOCATION WILL HAVE A "JESS. CO. VOTE CENTER" SIGN POSTED.
4.) How will the voting location serve as a focal point to meet the needs of a diverse community?
TO MEET THE NEEDS OF AN EVER CHANGING AND GROWING COMMUNITY WE WANT TO USE VOTE CENTERS WHICH ARE STRATEGICALLY PLACED TO COVER THE NORTHERN, SOUTHERN, EASTERN, WESTERN, AND CENTRAL AREAS OF JESSAMINE COUNTY. VOTE CENTERS ACCOMMODATE THE VOTERS BY NOT LIMITING WHERE THEY CAN GO VOTE. IT MAKES IT MORE CONVENIENT TO THOSE WORKING WHO CAN VOTE CLOSEST TO THEIR DESTINATION.



Commonwealth of Kentucky

Petition to Consolidate Precincts and Precinct Election Officers

County Name	
JESSAMINE COUNTY	
Election	Dates of Voting
2023 GENERAL	11-7-2023
Person Completing this Form	
Name	JOHNNY M. COLLIER
Title	JESSAMINE COUNTY CLERK
About Voting Location	
<i>Example: Tulip Poplar High, 123 Main Street, County High School</i>	
Name	LITTLE HICKMAN CHURCH
Address	1010 BRUMFIELD LN, NICH, KY 40356
Type	CHURCH FELLOWSHIP HALL
Number of Parking Spaces	Sufficient Parking Spaces?
25	YES
Voting Equipment to be Used	
Number	Type of equipment
2	VERITY SCANNERS
2	VERITY PRINTERS
1	VERITY ADA/DUO

Precincts in Voting Location	
Precinct name	Number of registered voters
ALL	41,493

Narrative Plan (please attach additional sheets if needed)

1.) Why is this consolidation of these precincts desirable?
 This is the same plan used in the last election

TO CONSOLIDATE OUR PRECINCTS WOULD ALLOW US TO USE LESS PRECINCT OFFICERS THAN IN THE PAST. LESS STAFF IS USED TO PREPARE THE VOTE CENTERS. DUE TO THESE CONTRIBUTING FACTORS THE COST FOR FISCAL COURT IS MUCH LESS

2.) In what manner will Precinct Officers be assigned?
 This location will be fully staffed with election officials

WE WILL HAVE 4 ELECTION OFFICERS ALLOCATED TO EVERY E-POLL CHECK-IN STATION; WITH EACH CHECK-IN HAVING 2 DEMOCRATS AND 2 REPUBLICANS.

3.) How will the voting location be publicized to voters? How will the location be noted as a "Vote Center?"

LOCAL NEWSPAPER, LOCAL RADIO, LOCAL TV NEWS STATIONS. EACH LOCATION WILL HAVE A "JESS. CO. VOTE CENTER" SIGN POSTED.

4.) How will the voting location serve as a focal point to meet the needs of a diverse community?

TO MEET THE NEEDS OF AN EVER CHANGING AND GROWING COMMUNITY WE WANT TO USE VOTE CENTERS WHICH ARE STRATEGICALLY PLACED TO COVER THE NORTHERN, SOUTHERN, EASTERN, WESTERN, AND CENTRAL AREAS OF JESSAMINE COUNTY. VOTE CENTERS ACCOMODATE THE VOTERS BY NOT LIMITING WHERE THEY CAN GO VOTE. IT MAKES IT MORE CONVENIENT TO THOSE WORKING WHO CAN VOTE CLOSEST TO THEIR DESTINATION.



Commonwealth of Kentucky

Petition to Consolidate Precincts and Precinct Election Officers

County Name	
JESSAMINE COUNTY	
Election	Dates of Voting
2023 GENERAL	11-7-2023
Person Completing this Form	
Name	JOHNNY M. COLLIER
Title	JESSAMINE COUNTY CLERK
About Voting Location	
<i>Example: Tulip Poplar High, 123 Main Street, County High School</i>	
Name	EAST JESSAMINE MIDDLE SCHOOL
Address	901 UNION MILL RD, NICH, KY 40356
Type	MIDDLE SCHOOL GYM
Number of Parking Spaces	Sufficient Parking Spaces?
75	YES
Voting Equipment to be Used	
Number	Type of equipment
3	VERITY SCANNERS
3	VERITY PRINTERS
1	VERITY ADA/DUO

Precincts in Voting Location	
Precinct name	Number of registered voters
ALL	41,493

Narrative Plan <i>(please attach additional sheets if needed)</i>
1.) Why is this consolidation of these precincts desirable?
<input checked="" type="checkbox"/> This is the same plan used in the last election
TO CONSOLIDATE OUR PRECINCTS WOULD ALLOW US TO USE LESS PRECINCT OFFICERS THAN IN THE PAST. LESS STAFF IS USED TO PREPARE THE VOTE CENTERS. DUE TO THESE CONTRIBUTING FACTORS THE COST FOR FISCAL COURT IS MUCH LESS
2.) In what manner will Precinct Officers be assigned?
<input checked="" type="checkbox"/> This location will be fully staffed with election officials
WE WILL HAVE 4 ELECTION OFFICERS ALLOCATED TO EVERY E-POLL CHECK-IN STATION; WITH EACH CHECK-IN HAVING 2 DEMOCRATS AND 2 REPUBLICANS.
3.) How will the voting location be publicized to voters? How will the location be noted as a "Vote Center?"
LOCAL NEWSPAPER, LOCAL RADIO, LOCAL TV NEWS STATIONS. EACH LOCATION WILL HAVE A "JESS. CO. VOTE CENTER" SIGN POSTED.
4.) How will the voting location serve as a focal point to meet the needs of a diverse community?
TO MEET THE NEEDS OF AN EVER CHANGING AND GROWING COMMUNITY WE WANT TO USE VOTE CENTERS WHICH ARE STRATEGICALLY PLACED TO COVER THE NORTHERN, SOUTHERN, EASTERN, WESTERN, AND CENTRAL AREAS OF JESSAMINE COUNTY. VOTE CENTERS ACCOMODATE THE VOTERS BY NOT LIMITING WHERE THEY CAN GO VOTE. IT MAKES IT MORE CONVENIENT TO THOSE WORKING WHO CAN VOTE CLOSEST TO THEIR DESTINATION.



Commonwealth of Kentucky

Petition to Consolidate Precincts and Precinct Election Officers

County Name	
JESSAMINE COUNTY	
Election	Dates of Voting
2023 GENERAL	11-7-2023
Person Completing this Form	
Name	JOHNNY M. COLLIER
Title	JESSAMINE COUNTY CLERK
About Voting Location	
<i>Example: Tulip Poplar High, 123 Main Street, County High School</i>	
Name	NICHOLASVILLE ELEMENTARY
Address	414 WEST MAPLE ST, NICH, KY 40356
Type	ELEMENTARY SCHOOL GYM
Number of Parking Spaces	Sufficient Parking Spaces?
50	YES
Voting Equipment to be Used	
Number	Type of equipment
2	VERITY SCANNERS
2	VERITY PRINTERS
1	VERITY ADA/DUO

Precincts in Voting Location	
Precinct name	Number of registered voters
ALL	41,493

Narrative Plan <i>(please attach additional sheets if needed)</i>
<p>1.) Why is this consolidation of these precincts desirable?</p> <p><input checked="" type="checkbox"/> This is the same plan used in the last election</p> <p>TO CONSOLIDATE OUR PRECINCTS WOULD ALLOW US TO USE LESS PRECINCT OFFICERS THAN IN THE PAST. LESS STAFF IS USED TO PREPARE THE VOTE CENTERS. DUE TO THESE CONTRIBUTING FACTORS THE COST FOR FISCAL COURT IS MUCH LESS</p>
<p>2.) In what manner will Precinct Officers be assigned?</p> <p><input checked="" type="checkbox"/> This location will be fully staffed with election officials</p> <p>WE WILL HAVE 4 ELECTION OFFICERS ALLOCATED TO EVERY E-POLL CHECK-IN STATION; WITH EACH CHECK-IN HAVING 2 DEMOCRATS AND 2 REPUBLICANS.</p>
<p>3.) How will the voting location be publicized to voters? How will the location be noted as a "Vote Center?"</p> <p>LOCAL NEWSPAPER, LOCAL RADIO, LOCAL TV NEWS STATIONS. EACH LOCATION WILL HAVE A "JESS. CO. VOTE CENTER" SIGN POSTED.</p>
<p>4.) How will the voting location serve as a focal point to meet the needs of a diverse community?</p> <p>TO MEET THE NEEDS OF AN EVER CHANGING AND GROWING COMMUNITY WE WANT TO USE VOTE CENTERS WHICH ARE STRATEGICALLY PLACED TO COVER THE NORTHERN, SOUTHERN, EASTERN, WESTERN, AND CENTRAL AREAS OF JESSAMINE COUNTY. VOTE CENTERS ACCOMMODATE THE VOTERS BY NOT LIMITING WHERE THEY CAN GO VOTE. IT MAKES IT MORE CONVENIENT TO THOSE WORKING WHO CAN VOTE CLOSEST TO THEIR DESTINATION.</p>



Commonwealth of Kentucky

Petition to Consolidate Precincts and Precinct Election Officers

County Name	
JESSAMINE COUNTY	
Election	Dates of Voting
2023 GENERAL	11-7-2023
Person Completing this Form	
Name	JOHNNY M. COLLIER
Title	JESSAMINE COUNTY CLERK
About Voting Location	
<i>Example: Tulip Poplar High, 123 Main Street, County High School</i>	
Name	WILMORE ELEMENTARY
Address	150 CAMPGROUND LN, WILMORE, KY 40390
Type	ELEMENTARY SCHOOL GYM
Number of Parking Spaces	Sufficient Parking Spaces?
75	YES
Voting Equipment to be Used	
Number	Type of equipment
3	VERITY SCANNERS
3	VERITY PRINTERS
1	VERITY ADA/DUO

Precincts in Voting Location	
Precinct name	Number of registered voters
ALL	41,493

Narrative Plan <i>(please attach additional sheets if needed)</i>
1.) Why is this consolidation of these precincts desirable? <input checked="" type="checkbox"/> This is the same plan used in the last election TO CONSOLIDATE OUR PRECINCTS WOULD ALLOW US TO USE LESS PRECINCT OFFICERS THAN IN THE PAST. LESS STAFF IS USED TO PREPARE THE VOTE CENTERS. DUE TO THESE CONTRIBUTING FACTORS THE COST FOR FISCAL COURT IS MUCH LESS
2.) In what manner will Precinct Officers be assigned? <input checked="" type="checkbox"/> This location will be fully staffed with election officials WE WILL HAVE 4 ELECTION OFFICERS ALLOCATED TO EVERY E-POLL CHECK-IN STATION; WITH EACH CHECK-IN HAVING 2 DEMOCRATS AND 2 REPUBLICANS.
3.) How will the voting location be publicized to voters? How will the location be noted as a "Vote Center?" LOCAL NEWSPAPER, LOCAL RADIO, LOCAL TV NEWS STATIONS. EACH LOCATION WILL HAVE A "JESS. CO. VOTE CENTER" SIGN POSTED.
4.) How will the voting location serve as a focal point to meet the needs of a diverse community? TO MEET THE NEEDS OF AN EVER CHANGING AND GROWING COMMUNITY WE WANT TO USE VOTE CENTERS WHICH ARE STRATEGICALLY PLACED TO COVER THE NORTHERN, SOUTHERN, EASTERN, WESTERN, AND CENTRAL AREAS OF JESSAMINE COUNTY. VOTE CENTERS ACCOMMODATE THE VOTERS BY NOT LIMITING WHERE THEY CAN GO VOTE. IT MAKES IT MORE CONVENIENT TO THOSE WORKING WHO CAN VOTE CLOSEST TO THEIR DESTINATION.



Commonwealth of Kentucky

Petition to Consolidate Precincts and Precinct Election Officers

County Name	
JESSAMINE COUNTY	
Election	Dates of Voting
2023 GENERAL	11-7-2023
Person Completing this Form	
Name	JOHNNY M. COLLIER
Title	JESSAMINE COUNTY CLERK
About Voting Location	
<i>Example: Tulip Poplar High, 123 Main Street, County High School</i>	
Name	JESSAMINE COUNTY PUBLIC LIBRARY
Address	600 SOUTH MAIN ST, NICH, LY 40356
Type	CONFERENCE ROOM
Number of Parking Spaces	Sufficient Parking Spaces?
75	YES
Voting Equipment to be Used	
Number	Type of equipment
2	VERITY SCANNERS
2	VERITY PRINTERS
1	VERITY ADA/DUO

Precincts in Voting Location	
Precinct name	Number of registered voters
ALL	41,493

Narrative Plan <i>(please attach additional sheets if needed)</i>
1.) Why is this consolidation of these precincts desirable?
<input checked="" type="checkbox"/> This is the same plan used in the last election
TO CONSOLIDATE OUR PRECINCTS WOULD ALLOW US TO USE LESS PRECINCT OFFICERS THAN IN THE PAST. LESS STAFF IS USED TO PREPARE THE VOTE CENTERS. DUE TO THESE CONTRIBUTING FACTORS THE COST FOR FISCAL COURT IS MUCH LESS
2.) In what manner will Precinct Officers be assigned?
<input checked="" type="checkbox"/> This location will be fully staffed with election officials
WE WILL HAVE 4 ELECTION OFFICERS ALLOCATED TO EVERY E-POLL CHECK-IN STATION; WITH EACH CHECK-IN HAVING 2 DEMOCRATS AND 2 REPUBLICANS.
3.) How will the voting location be publicized to voters? How will the location be noted as a "Vote Center?"
LOCAL NEWSPAPER, LOCAL RADIO, LOCAL TV NEWS STATIONS. EACH LOCATION WILL HAVE A "JESS. CO. VOTE CENTER" SIGN POSTED.
4.) How will the voting location serve as a focal point to meet the needs of a diverse community?
TO MEET THE NEEDS OF AN EVER CHANGING AND GROWING COMMUNITY WE WANT TO USE VOTE CENTERS WHICH ARE STRATEGICALLY PLACED TO COVER THE NORTHERN, SOUTHERN, EASTERN, WESTERN, AND CENTRAL AREAS OF JESSAMINE COUNTY. VOTE CENTERS ACCOMMODATE THE VOTERS BY NOT LIMITING WHERE THEY CAN GO VOTE. IT MAKES IT MORE CONVENIENT TO THOSE WORKING WHO CAN VOTE CLOSEST TO THEIR DESTINATION.

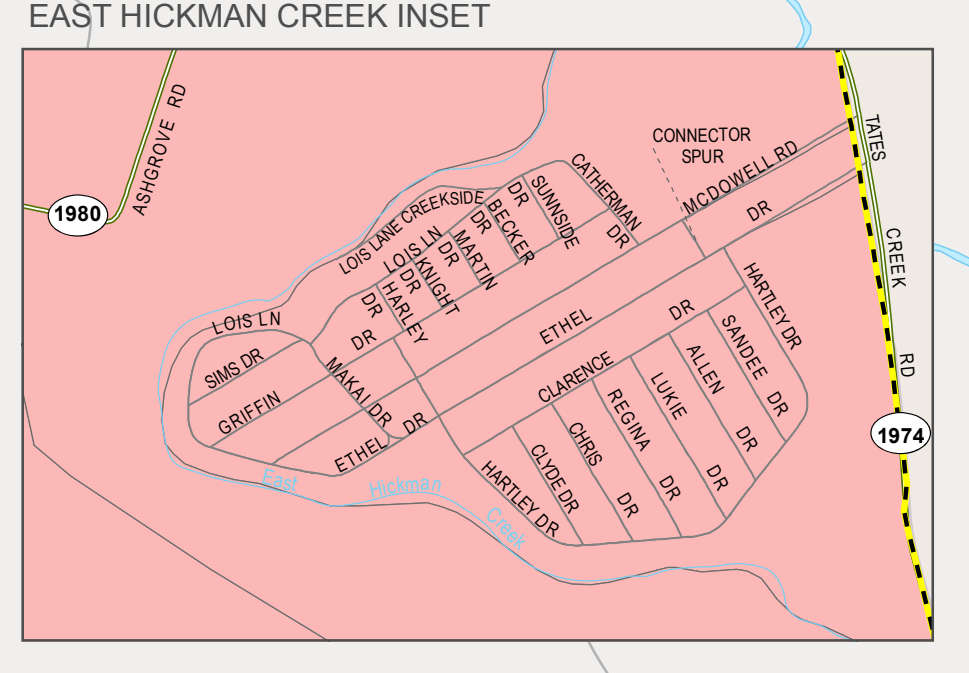
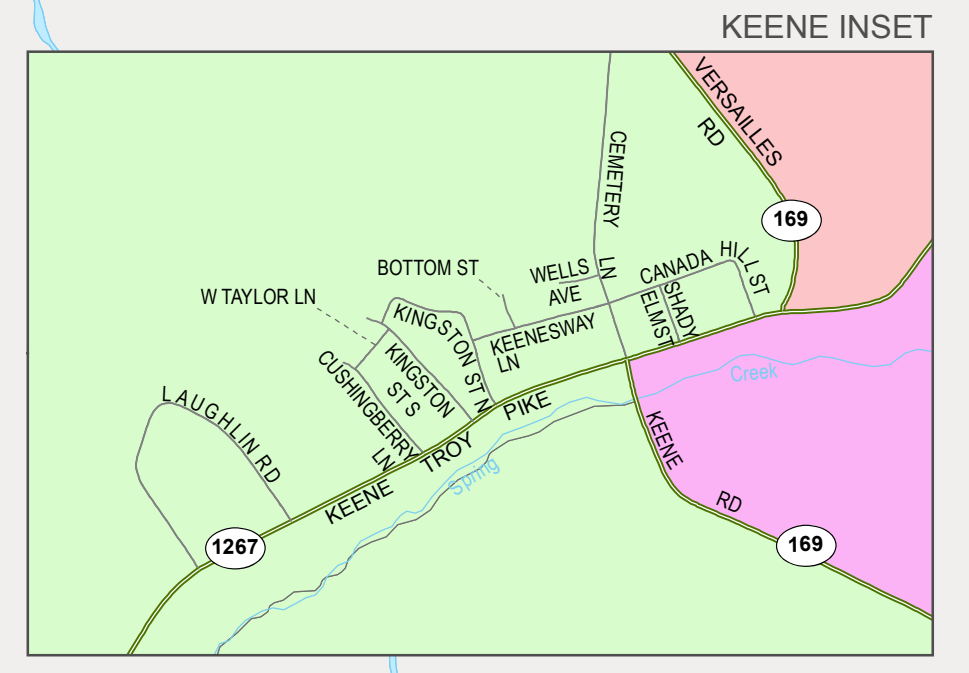
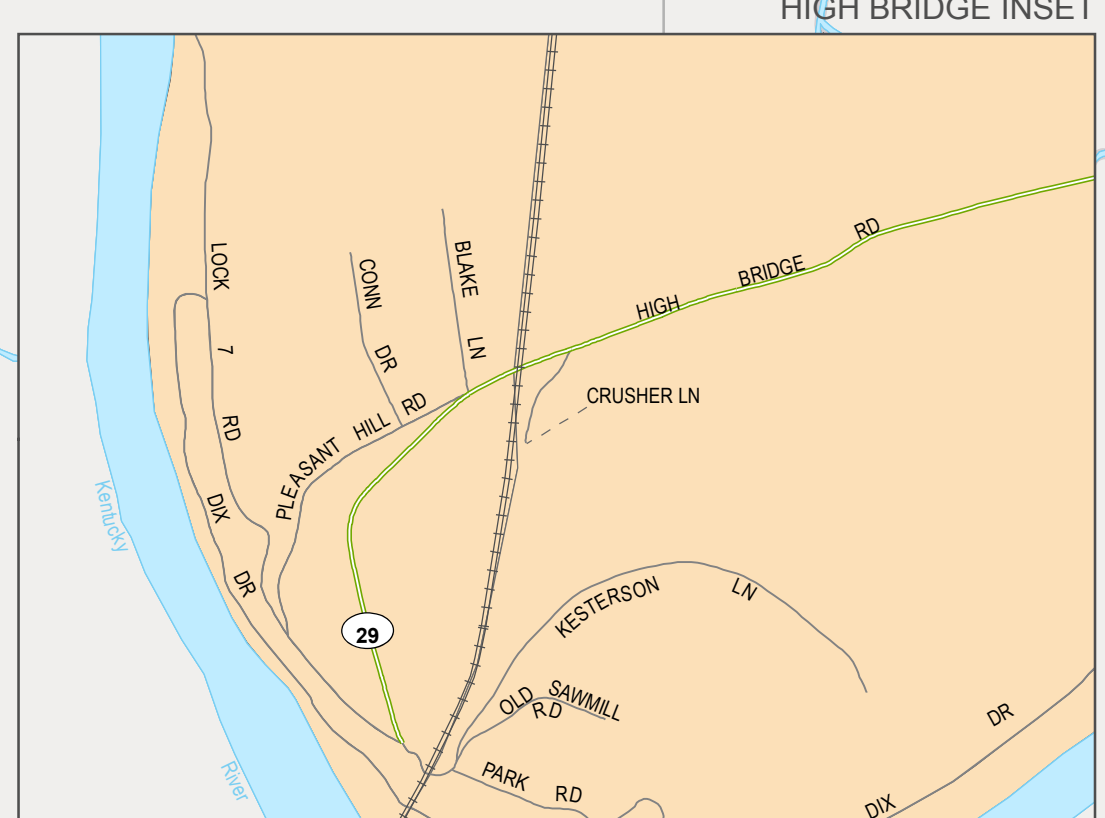
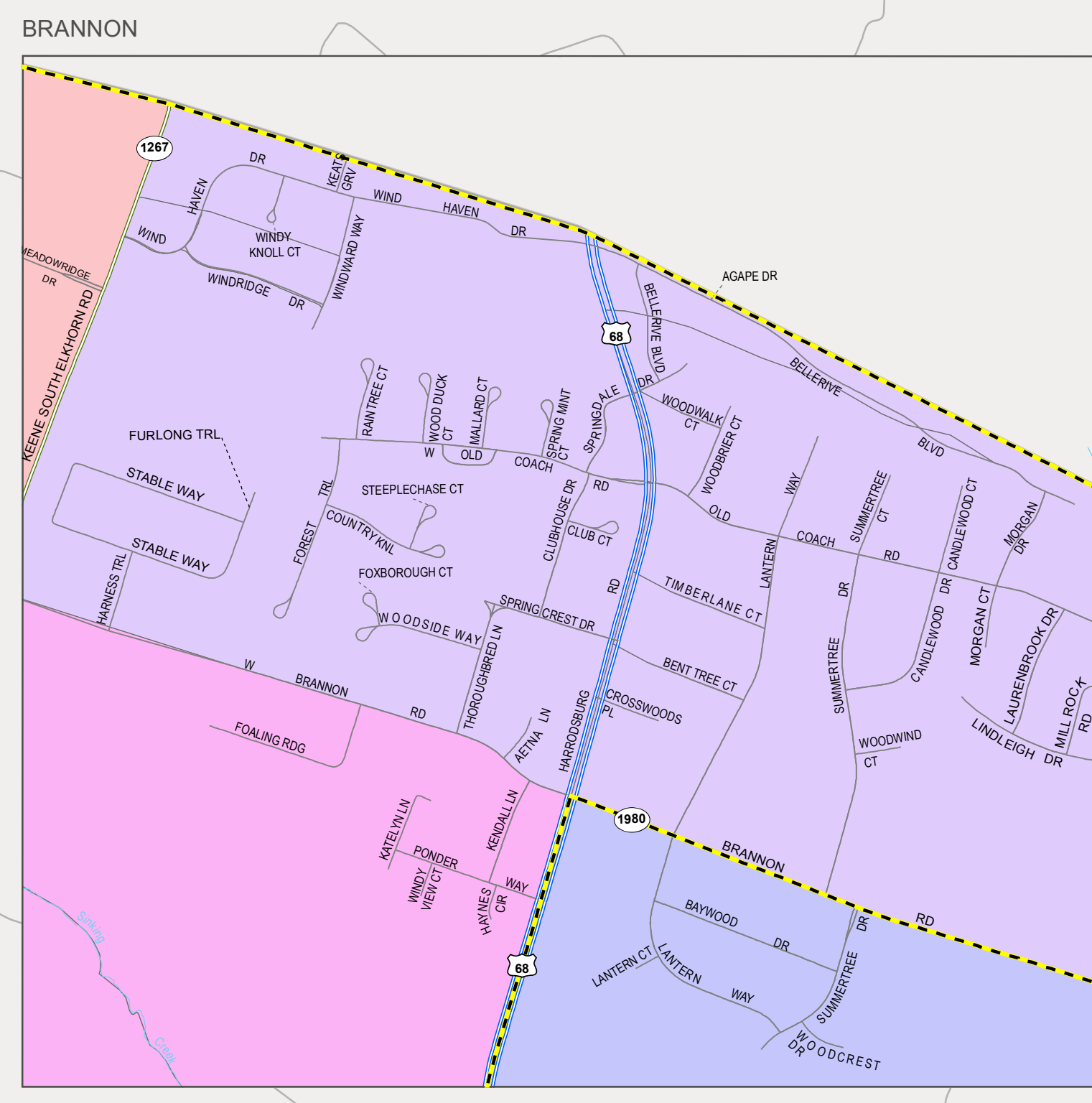
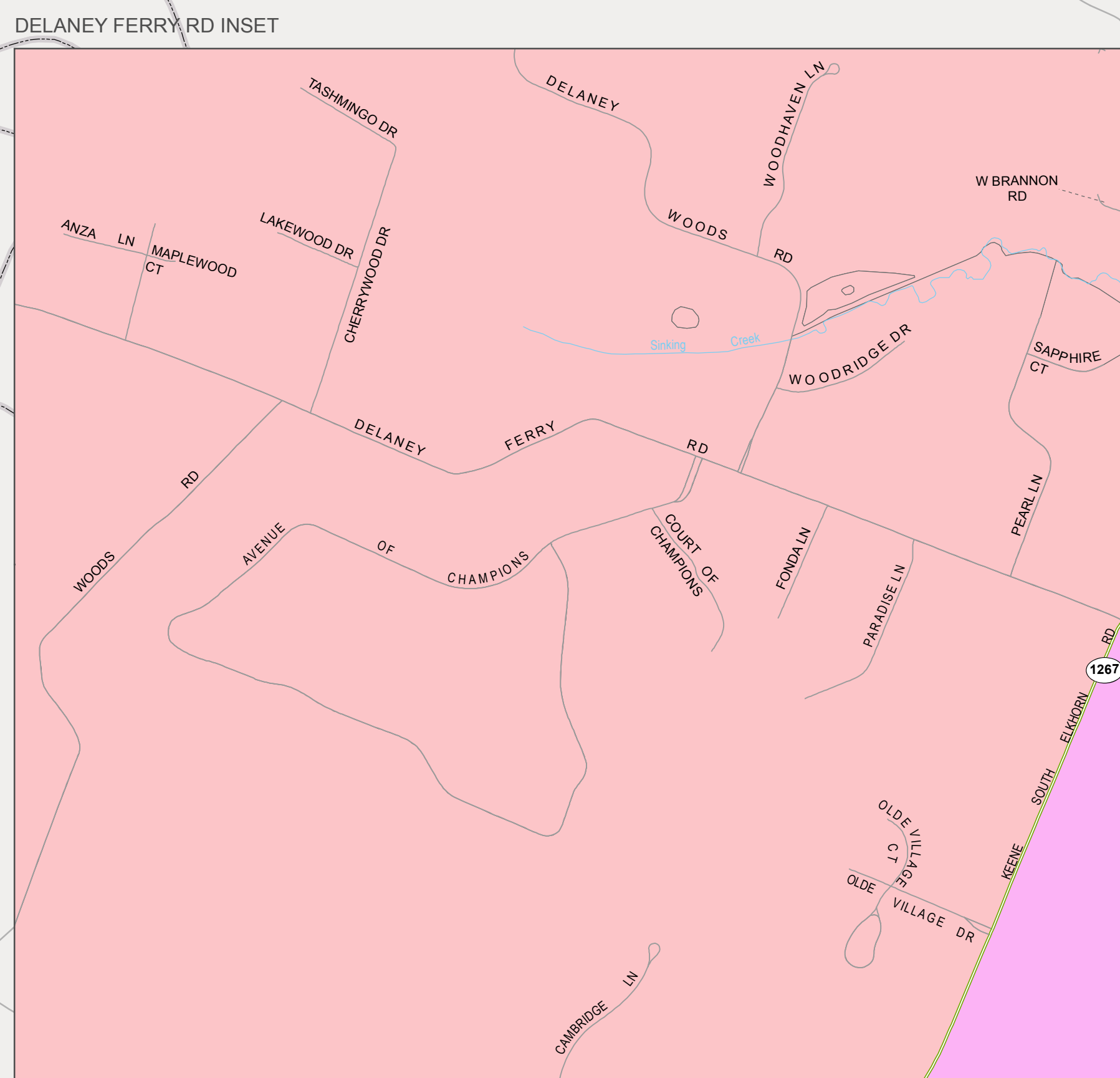
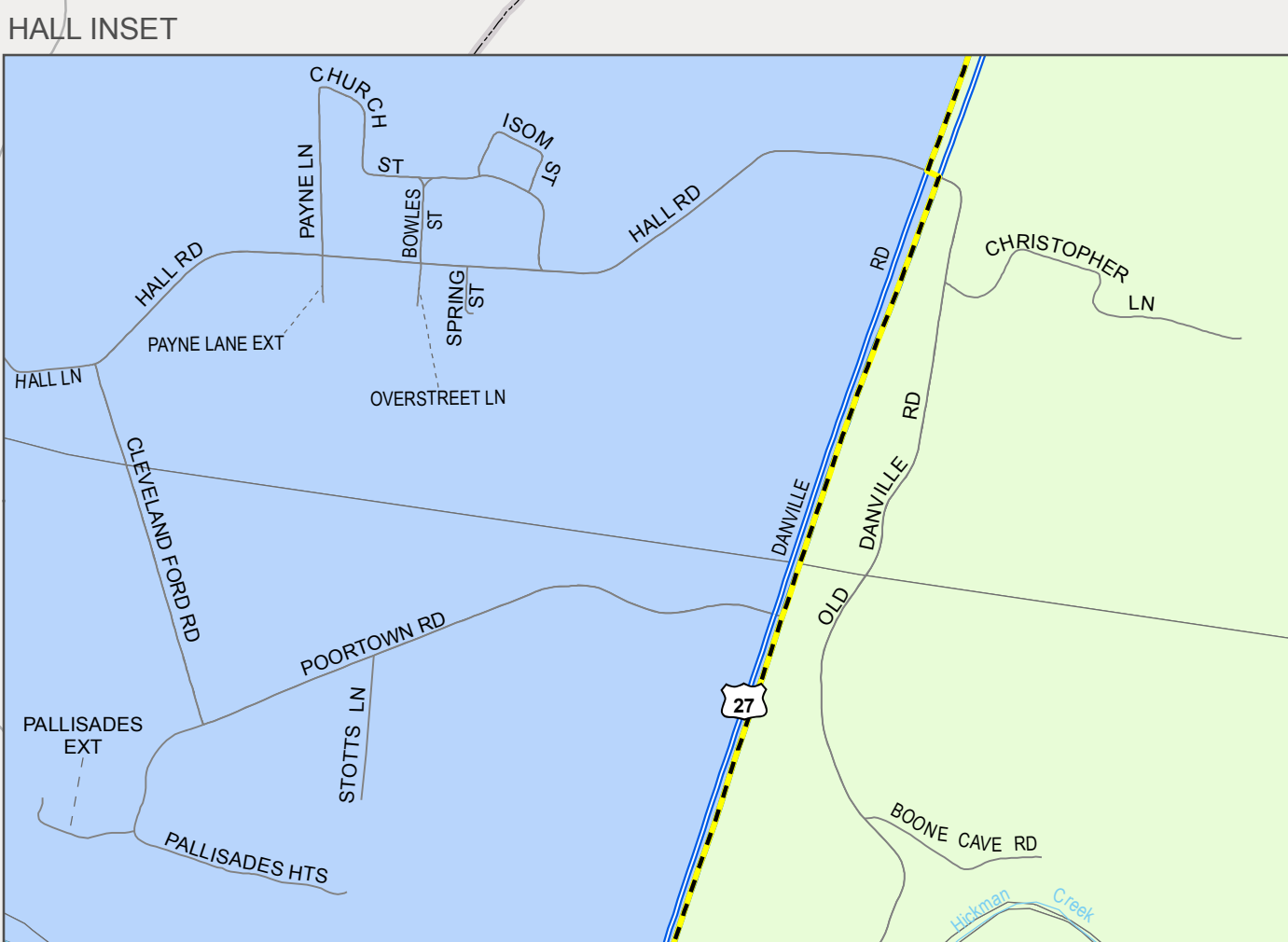
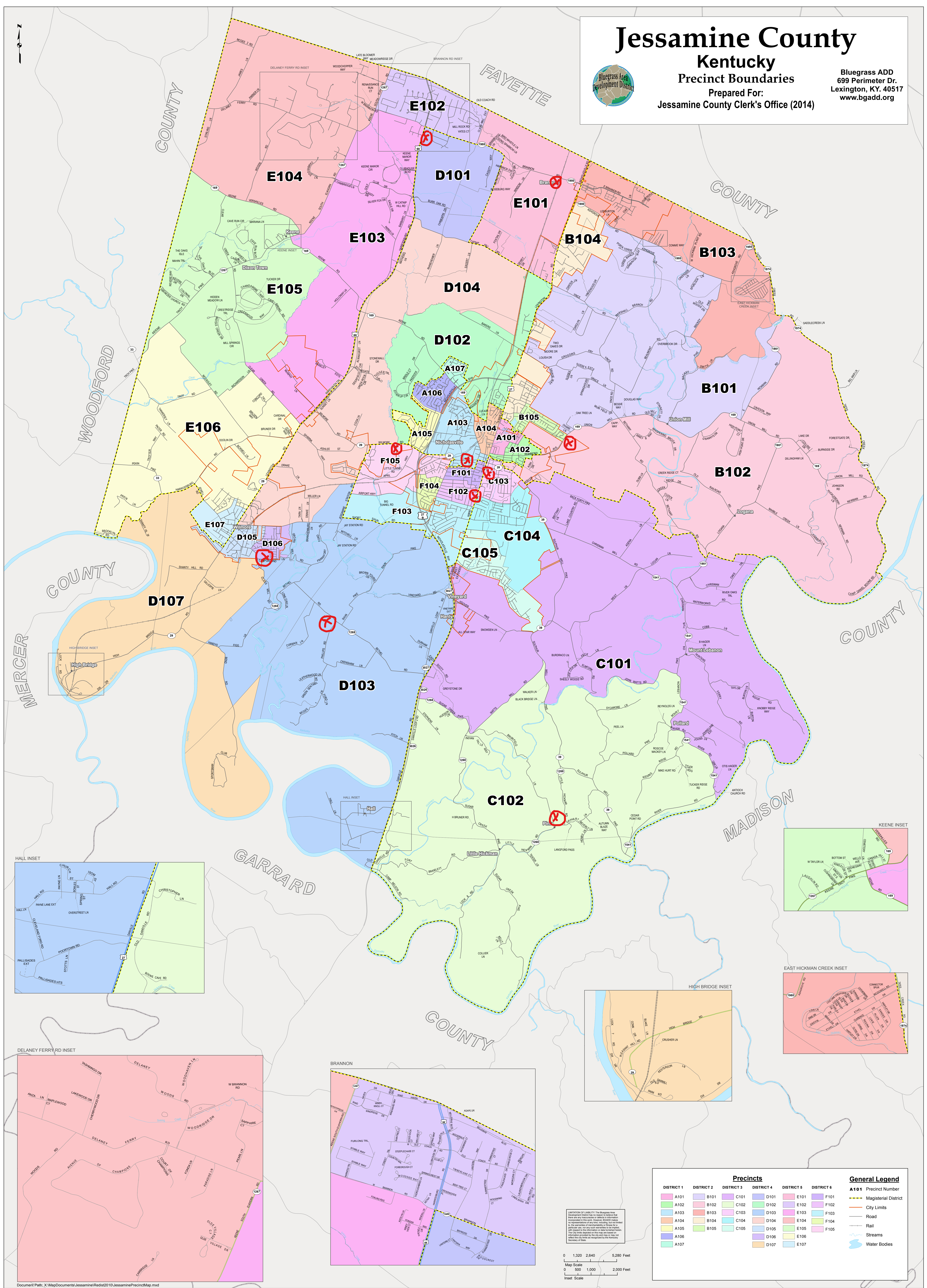
Jessamine County

Kentucky
Precinct Boundaries

Prepared For:
Jessamine County Clerk's Office (2014)



Bluegrass ADD
699 Perimeter Dr.
Lexington, KY, 40517
www.bgadd.org



Precincts						General Legend	
DISTRICT 1 A101	DISTRICT 2 B101	DISTRICT 3 C101	DISTRICT 4 D101	DISTRICT 5 E101	DISTRICT 6 F101	A101	Precinct Number
A102	B102	C102	D102	E102	F102	—	City Limits
A103	B103	C103	D103	E103	F103	—	Road
A104	B104	C104	D104	E104	F104	—	Rail
A105	B105	C105	D105	E105	F105	—	Streams
A106	B106	C106	D106	E106	F106	—	Water Bodies
A107	B107	C107	D107	E107	F107	—	

LIBERATION OF SLAVERY: The Bluegrass Area Development District has made its information available to the public. However, the District does not warrant the accuracy or completeness of the information. The City Clerk's Office is not responsible for any errors or omissions. The City Clerk's Office is not responsible for any errors or omissions. The City Clerk's Office is not responsible for any errors or omissions.

0 1,320 2,640 5,280 Feet
Map Scale
0 500 1,000 2,000 Feet
Inset Scale