



Commonwealth of Kentucky

County Election Planning Report

County Name	
Mason	
Election	
General Election - Nov. 7, 2023	
Person Completing this Form	
Name	Stephanie G. Schumacher
Title	Mason County Clerk
Phone	606-564-3341

For in-person voting on Election Day, the County Board of Elections will (check one):

- Consolidate precincts and precinct election officers (Requires Form SBE 74);
- Utilize the same consolidation plan that was used in a previous election (Requires previous Form SBE 74); or
- Open all existing precincts.

Excused in-person absentee voting will occur (check one):

- Within the County Clerk's office; or
- In another location within the county (Requires Form SBE 74).

No-excuse in-person absentee voting will occur (check one):

- Within the County Clerk's office; or
- In another location within the county (Requires Form SBE 74).

Absentee ballot drop-boxes will be located (minimum of one location required):

Mason County Clerk's Office

27 W 3rd St. Maysville, KY 41056

I have attached:

- All required Form SBE 74 sheets
- Relevant Maps
- Supplemental Narrative

 8/3/23
Signature Date

***Stephanie G. Schumacher
Mason County Clerk
P.O. Box 234
Maysville, KY 41056
(606)564-3341***

August 3, 2023

State Board of Elections
140 Walnut St.
Maysville, KY 41056

Enclosed you will find six (6) SBE 74 forms detailing my election plan for one early voting center and five vote centers for the General Election on Nov. 7, 2023. There is one change from the plan submitted for the Primary Election earlier this year. The early voting location has been moved to the Mason County Public Library. Previously, it had been held at the Central United Methodist Church Fellowship Hall, but this property is now being sold. The Mason County Board of Elections met July 18 at the library and assessed the space that would be used for voting. The community room is large and has plenty of space for equipment, election officers and voters. It also has its own entrance. The board voted unanimously to use the community room at the library in place of the Central United Methodist Church Fellowship Hall. The library will be designated as the early voting location as well as a vote center on Election Day. This was the only change made to the election plan. The other four vote center locations that will be used on Election Day are the same locations that have been used for the past several elections and have worked well in our county.

If you have questions or need additional information, please do not hesitate to contact me.

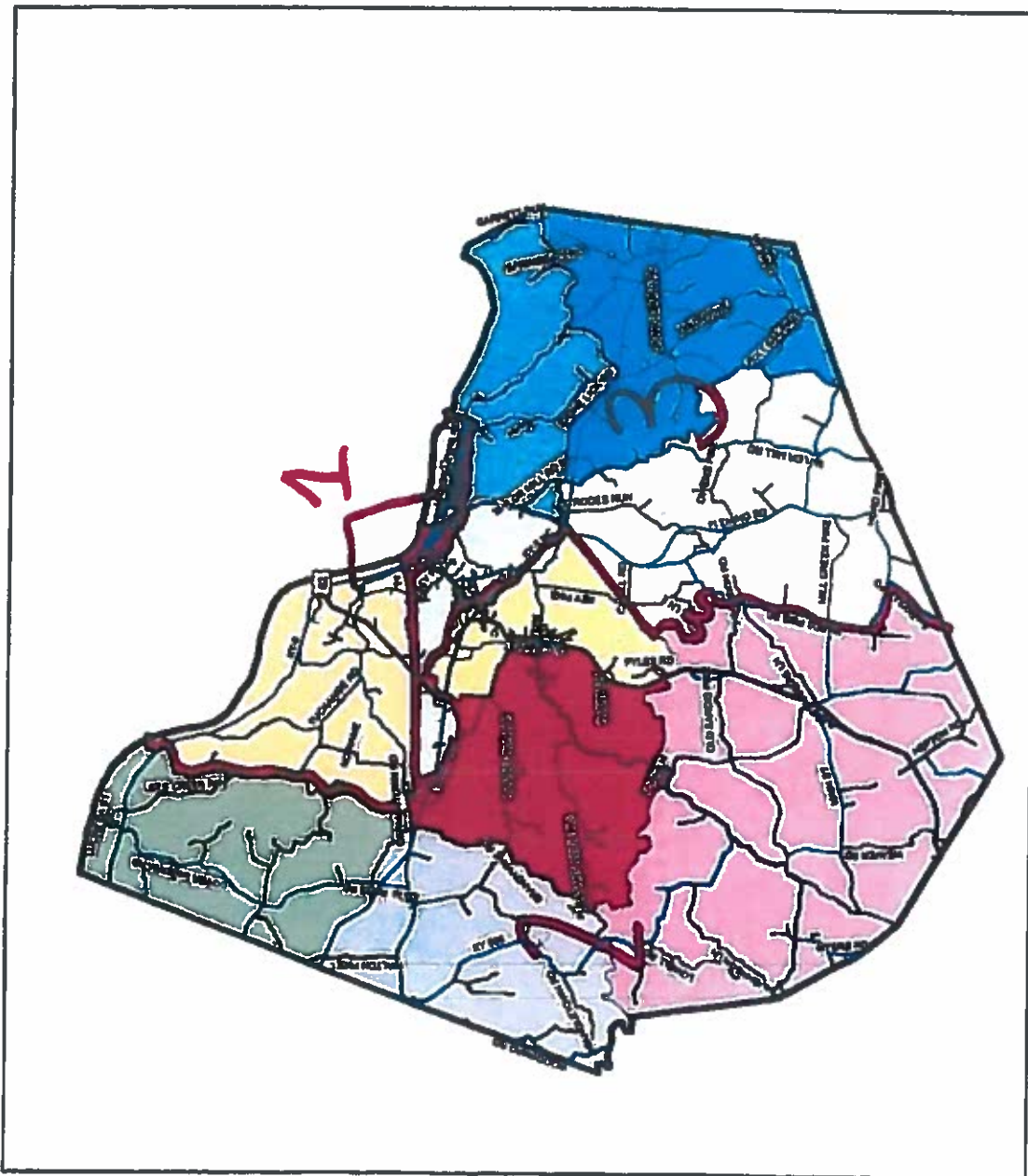
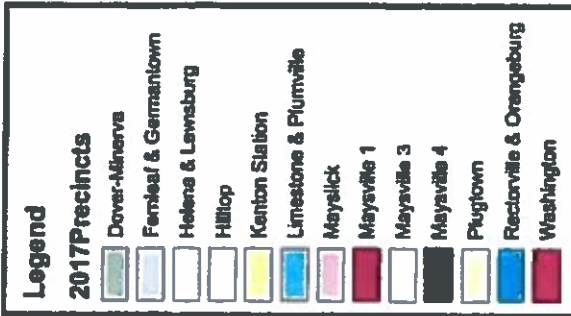
Sincerely,



Stephanie G. Schumacher
Mason County Clerk

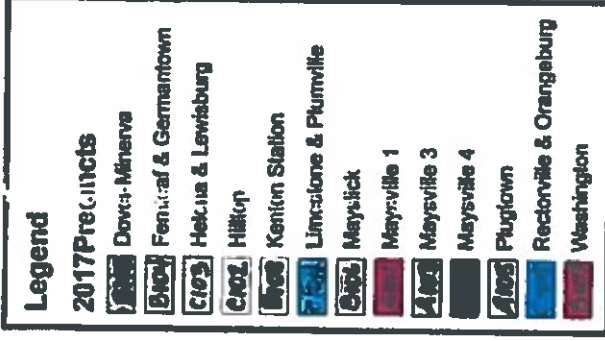
Mason County

2017 Voting Precincts

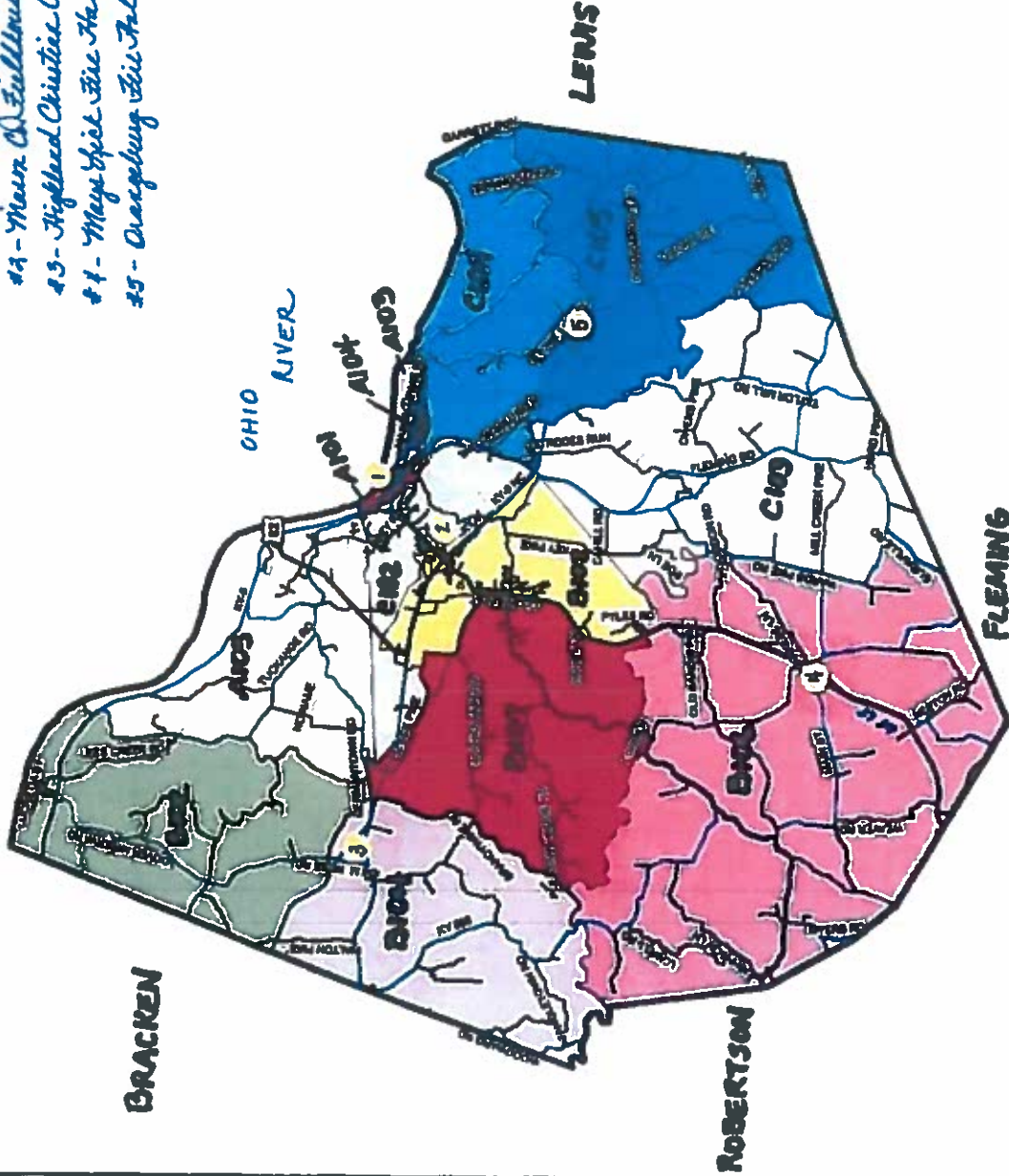


Mason County

2017 Voting Precincts



- #1 - Mason Co. Public Schools
- #11 - Mason Christian Church
- #13 - Highland Christian Church
- #14 - Maysville Fire Hall
- #15 - Orangeburg Fire Hall





Commonwealth of Kentucky

Petition to Consolidate Precincts and Precinct Election Officers

County Name	
Mason	
Election	Dates of Voting
General	Nov. 2-4, 2023
Person Completing this Form	
Name	Stephanie G. Schumacher
Title	Mason County Clerk
About Voting Location	
<i>Example: Tulip Poplar High, 123 Main Street, County High School</i>	
Name	Mason County Public Library
Address	218 E. 3rd St. - Maysville
Type	Public Library - Community Room
Number of Parking Spaces	Sufficient Parking Spaces?
50	Yes
Voting Equipment to be Used	
Number	Type of equipment
1	Verity Scan Machine
1	Verity Duo Standalone Machine
1	Verity Print

Precincts in Voting Location	
Precinct name	Number of registered voters
ALL	13,073

Narrative Plan <i>(please attach additional sheets if needed)</i>
1.) Why is this consolidation of these precincts desirable? <input type="checkbox"/> This is the same plan used in the last election
The library will now be used for early voting as the previous location, which was a church fellowship hall, is being sold. The library is located in Commissioner District 1 and is approximately one mile from the previous location and is well know in the community. We will be using the community room for early voting. It is spacious and has its own entrance and exit.
2.) In what manner will Precinct Officers be assigned? <input checked="" type="checkbox"/> This location will be fully staffed with election officials
Election officers will be assigned by party and duty at the vote center.
3.) How will the voting location be publicized to voters? How will the location be noted as a "Vote Center?"
The vote center will be publicized through the newspaper, radio, tv ads and social media.
4.) How will the voting location serve as a focal point to meet the needs of a diverse community?
The library is a central point in downtown Maysville and its location is easily accessible. Those living or working in the downtown area could walk to the library. For those driving, the library offers a large parking lot.



Commonwealth of Kentucky

Petition to Consolidate Precincts and Precinct Election Officers

County Name	
Mason	
Election	Dates of Voting
General	Nov. 7, 2023
Person Completing this Form	
Name	Stephanie G. Schumacher
Title	Mason County Clerk
About Voting Location	
<i>Example: Tulip Poplar High, 123 Main Street, County High School</i>	
Name	Mason County Public Library
Address	218 E. 3rd St. - Maysville
Type	Public Library - Community Room
Number of Parking Spaces	Sufficient Parking Spaces?
50	Yes
Voting Equipment to be Used	
Number	Type of equipment
1	Verity Scan Machine
1	Verity Duo Standalone Machine
1	Verity Print

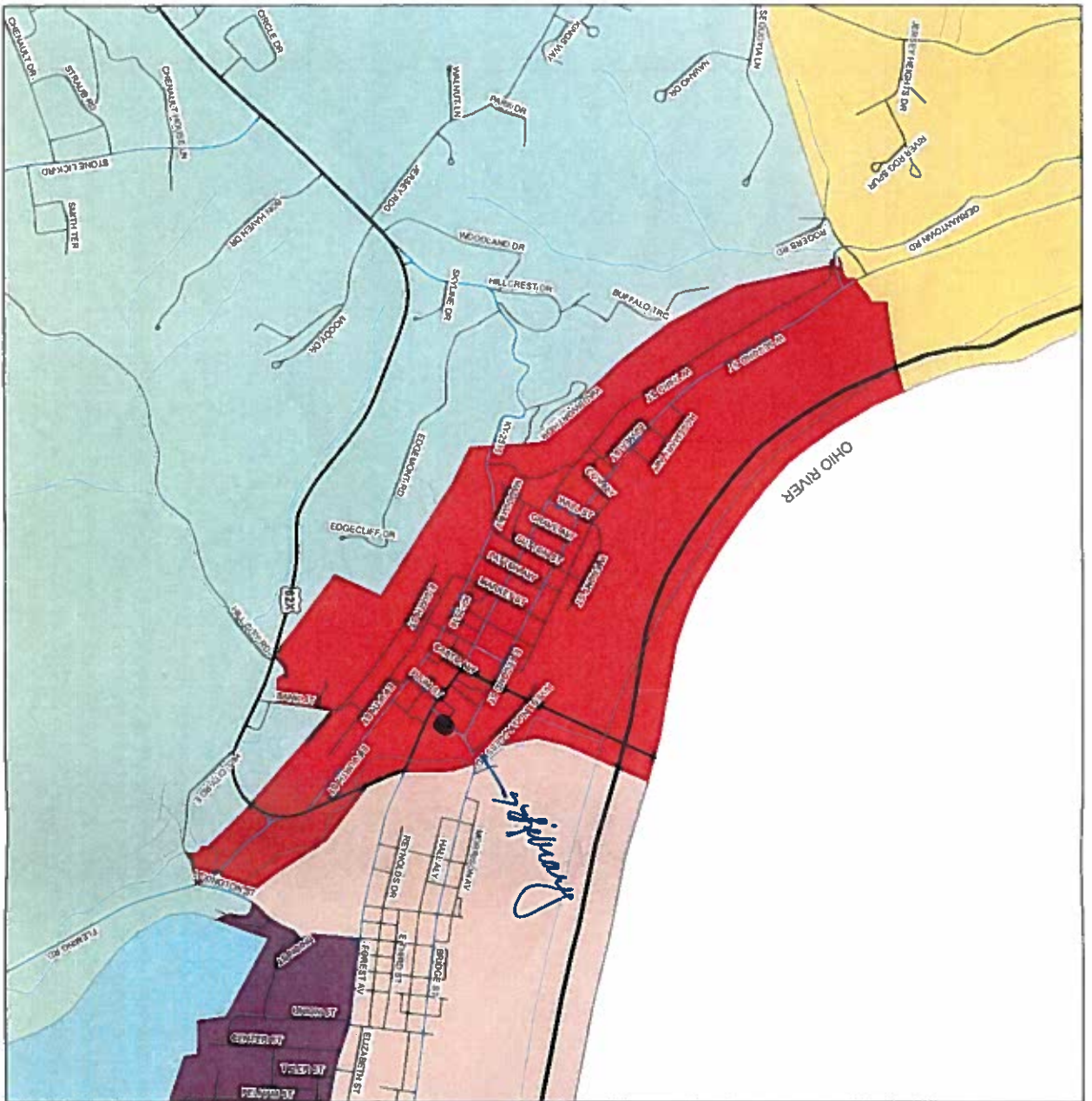
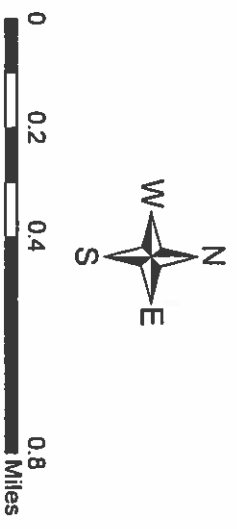
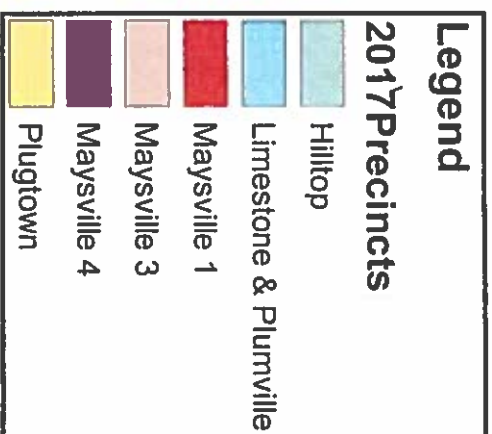
Precincts in Voting Location	
Precinct name	Number of registered voters
ALL	13,073

Narrative Plan <i>(please attach additional sheets if needed)</i>
1.) Why is this consolidation of these precincts desirable?
<input type="checkbox"/> This is the same plan used in the last election
The library will now be used for early voting as the previous location, which was a church fellowship hall, is being sold. The library is approximately one mile from the previous location and is well know in the community. We will be using the community room for early voting. It is spacious and has its own entrance and exit.
2.) In what manner will Precinct Officers be assigned?
<input checked="" type="checkbox"/> This location will be fully staffed with election officials
Election officers will be assigned by party and duty at the vote center.
3.) How will the voting location be publicized to voters? How will the location be noted as a "Vote Center?"
The vote center will be publicized through the newspaper, radio, tv ads and social media.
4.) How will the voting location serve as a focal point to meet the needs of a diverse community?
The library is a central point in downtown Maysville and its location is easily accessible. Those living or working in the downtown area could walk to the library. For those driving, the library offers a large parking lot.



google.com x +
eastgoogle.com
30
15.8 ft

Mason County
 Maysville 1
 2017 Voting Precincts





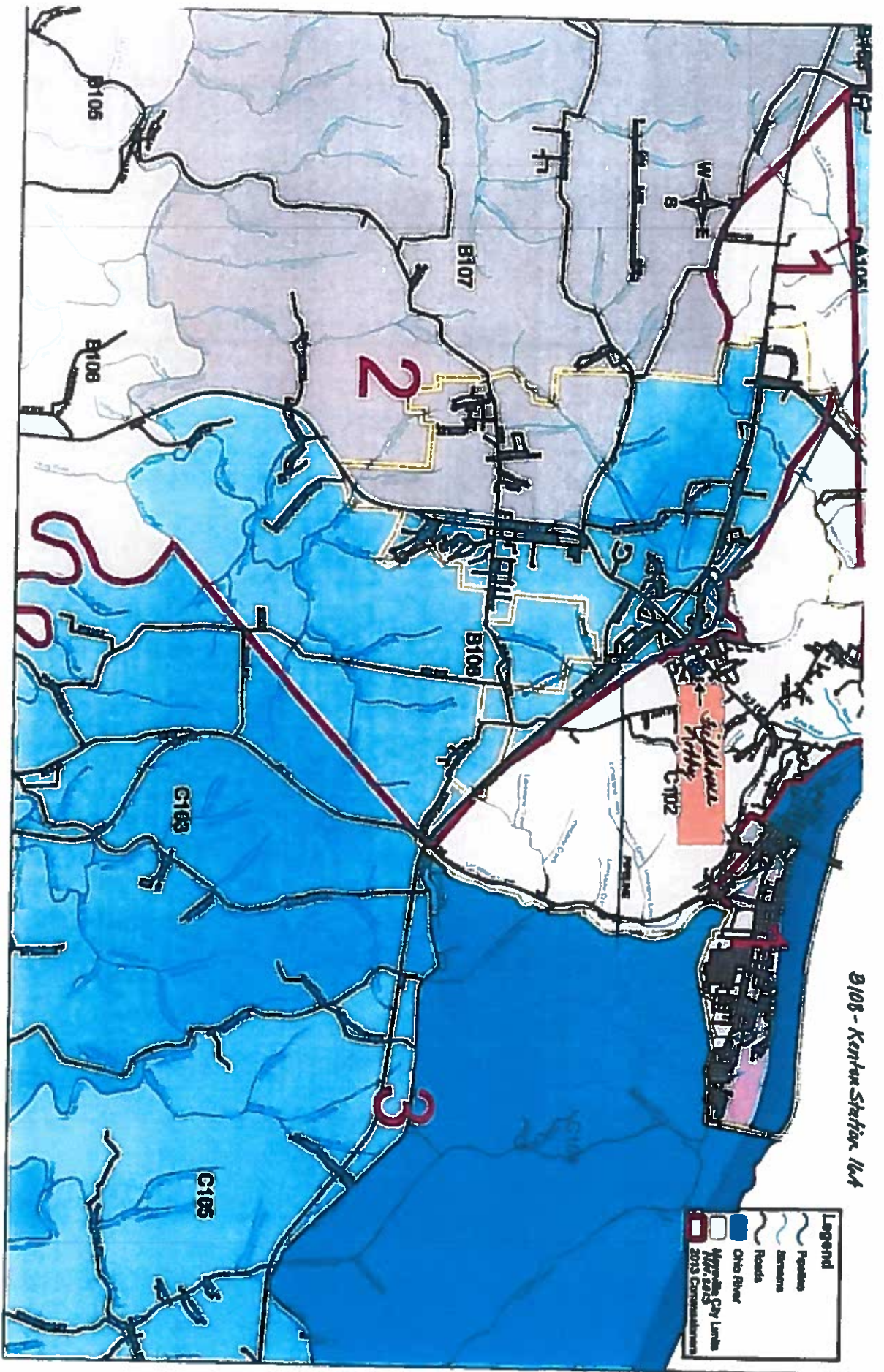
Commonwealth of Kentucky

Petition to Consolidate Precincts and Precinct Election Officers

County Name	
Mason	
Election	Dates of Voting
General	Nov. 7, 2023
Person Completing this Form	
Name	Stephanie G. Schumacher
Title	Mason County Clerk
About Voting Location	
<i>Example: Tulip Poplar High, 123 Main Street, County High School</i>	
Name	Mason County Fieldhouse
Address	1320 US 68 - Maysville
Type	Gymnasium
Number of Parking Spaces	Sufficient Parking Spaces?
100+	Yes
Voting Equipment to be Used	
Number	Type of equipment
2	Verity Scan Machines
1	Verity Duo Standalone Machine
3	Verity Prints

Precincts in Voting Location	
Precinct name	Number of registered voters
ALL	13,073

Narrative Plan <i>(please attach additional sheets if needed)</i>
1.) Why is this consolidation of these precincts desirable? <input checked="" type="checkbox"/> This is the same plan used in the last election <p>The Mason County Fieldhouse is well-liked by voters and is the most popular vote center in Mason County, due to its large space, ease of access and multiple levels of parking.</p>
2.) In what manner will Precinct Officers be assigned? <input checked="" type="checkbox"/> This location will be fully staffed with election officials <p>Election officers will be assigned by party and duty at the vote center.</p>
3.) How will the voting location be publicized to voters? How will the location be noted as a "Vote Center?" <p>The vote center will be publicized through the newspaper, radio, tv ads and social media.</p>
4.) How will the voting location serve as a focal point to meet the needs of a diverse community? <p>The Fieldhouse is located along US 68, which is heavily traveled during the day, as it stands among retail stores, restaurants, banks and schools. The centrality of the location serves voters well.</p>



B108 - Kenton Station, KY



Siddons
Property



Commonwealth of Kentucky

Petition to Consolidate Precincts and Precinct Election Officers

County Name	
Mason	
Election	Dates of Voting
General	Nov. 7, 2023
Person Completing this Form	
Name	Stephanie G. Schumacher
Title	Mason County Clerk
About Voting Location	
<i>Example: Tulip Poplar High, 123 Main Street, County High School</i>	
Name	Mays Lick Fire Hall
Address	5036 Saltlake Circle - Mays Lick
Type	Volunteer Fire Department - Fellowship Hall
Number of Parking Spaces	Sufficient Parking Spaces?
20	Yes
Voting Equipment to be Used	
Number	Type of equipment
1	Verity Scan Machine
1	Verity Duo Standalone Machine
1	Verity Print

Precincts in Voting Location	
Precinct name	Number of registered voters
ALL	13,073

Narrative Plan <i>(please attach additional sheets if needed)</i>
1.) Why is this consolidation of these precincts desirable? <input checked="" type="checkbox"/> This is the same plan used in the last election The Mays Lick Fire Hall will be used as a vote center and is located in Commissioner District 2, and will be especially convenient to those voters in the southern part of the county.
2.) In what manner will Precinct Officers be assigned? <input checked="" type="checkbox"/> This location will be fully staffed with election officials Election officers will be assigned by party and duty at the vote center.
3.) How will the voting location be publicized to voters? How will the location be noted as a "Vote Center?" The vote center will be publicized through the newspaper, radio, tv ads and social media.
4.) How will the voting location serve as a focal point to meet the needs of a diverse community? The Mays Lick Fire Hall is located along US 68, which is traveled by residents of the county commuting to and from Lexington for work. This location is easy to access from US 68 and will be popular among the residents near the fire hall, as well as those voters traveling south along US 68.

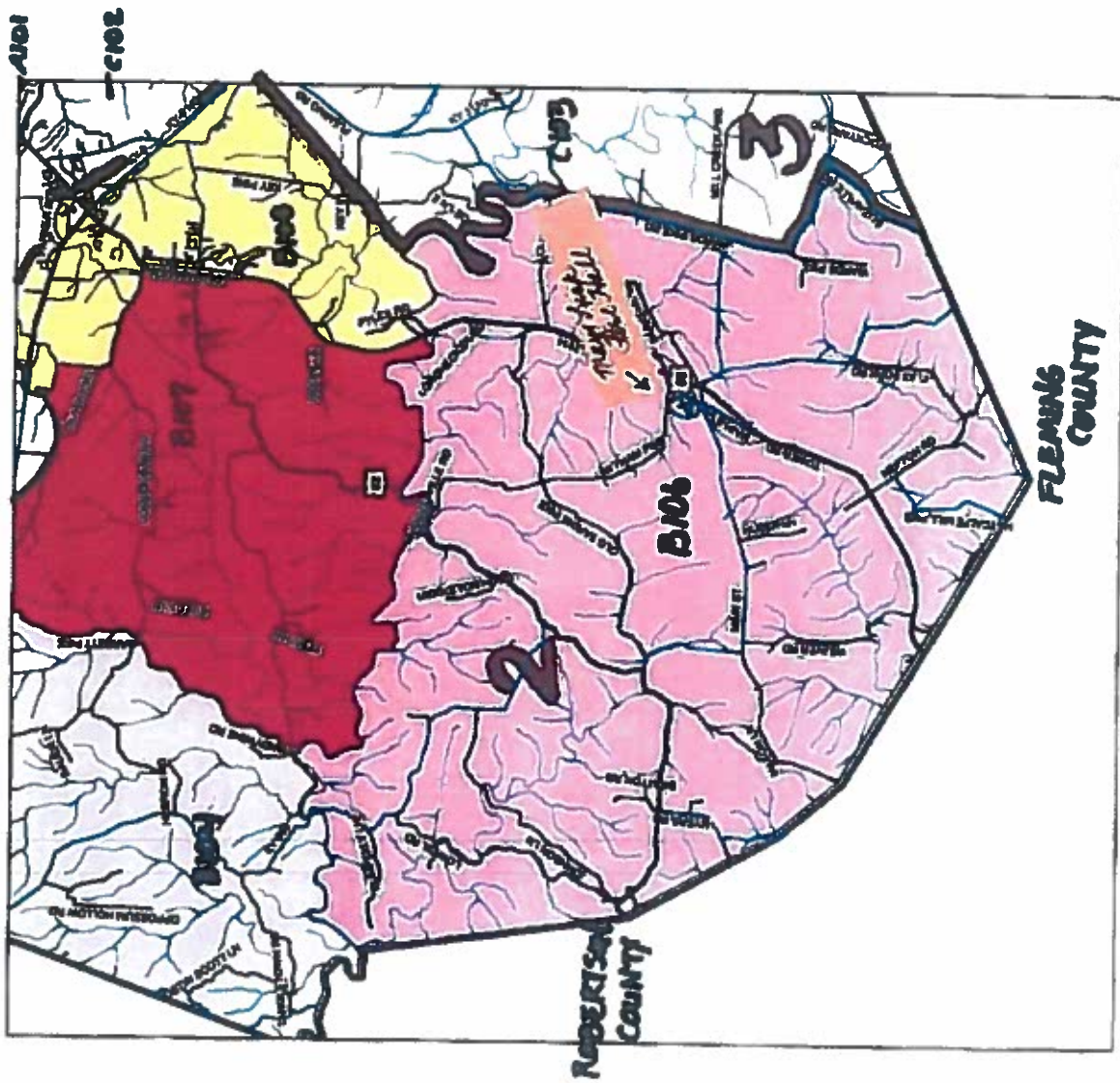
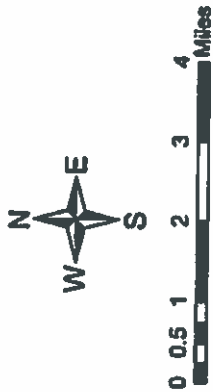
Mason County
 May's Lick - B104
 2017 Voting Precincts

Legend

2017 Precincts

- B104 Fernleaf & Germantown
- C103 Helena & Lewisburg
- C102 Hilltop
- B108 Kenton Station
- B106 Mayslick
- A101 Maysville 1
- Washington

Commission Districts - 2013







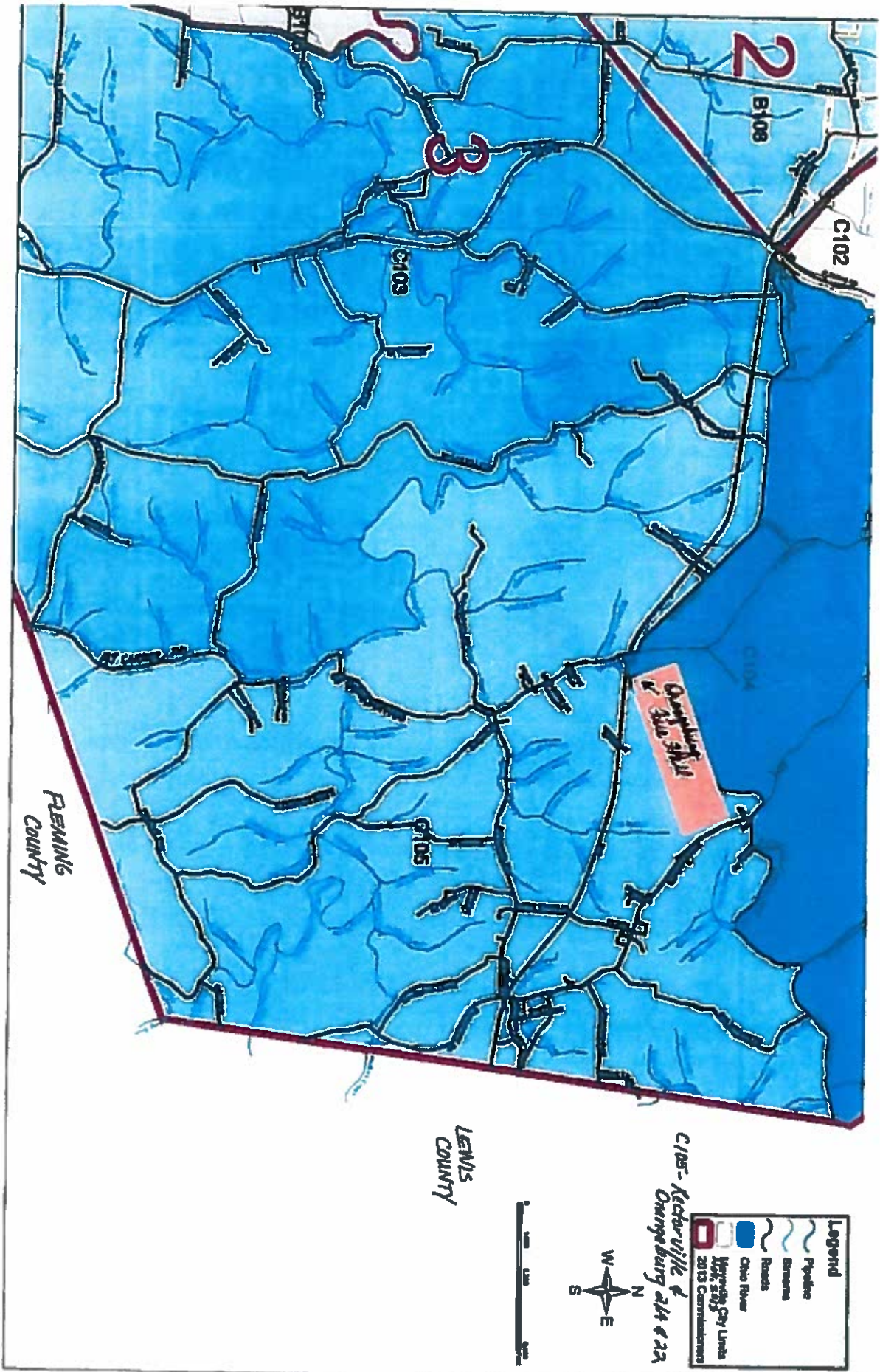
Commonwealth of Kentucky

Petition to Consolidate Precincts and Precinct Election Officers

County Name	
Mason	
Election	Dates of Voting
General	Nov. 7, 2023
Person Completing this Form	
Name	Stephanie G. Schumacher
Title	Mason County Clerk
About Voting Location	
<i>Example: Tulip Poplar High, 123 Main Street, County High School</i>	
Name	Orangeburg Fire Hall
Address	8002 Day Pike - Maysville
Type	Volunteer Fire Department - Fellowship Hall
Number of Parking Spaces	Sufficient Parking Spaces?
20	Yes
Voting Equipment to be Used	
Number	Type of equipment
1	Verity Scan Machine
1	Verity Duo Standalone Machine
1	Verity Print

Precincts in Voting Location	
Precinct name	Number of registered voters
ALL	13,073

Narrative Plan <i>(please attach additional sheets if needed)</i>
1.) Why is this consolidation of these precincts desirable? <input checked="" type="checkbox"/> This is the same plan used in the last election <p>The Orangeburg Fire Hall will be used as a vote center and is located in Commissioner District 3, and will be especially convenient to those voters in the eastern part of the county.</p>
2.) In what manner will Precinct Officers be assigned? <input checked="" type="checkbox"/> This location will be fully staffed with election officials <p>Election officers will be assigned by party and duty at the vote center.</p>
3.) How will the voting location be publicized to voters? How will the location be noted as a "Vote Center?" <p>The vote center will be publicized through the newspaper, radio, tv ads and social media.</p>
4.) How will the voting location serve as a focal point to meet the needs of a diverse community? <p>The Orangeburg Fire Hall is located along the AA Highway, which is traveled by residents of the county commuting to and from work. This location is easy to access from the AA Highway and will be popular among the residents near the fire hall as well as those voters traveling east along the AA Highway.</p>



Legend	
	Pipelines
	Streams
	Roads
	Ohio River
	Municipal City Limits 1876-2013
	2013 Construction

C105- Rochester &
Orangeburg 2/14 & 22



LENOX
COUNTY

REMIING
COUNTY





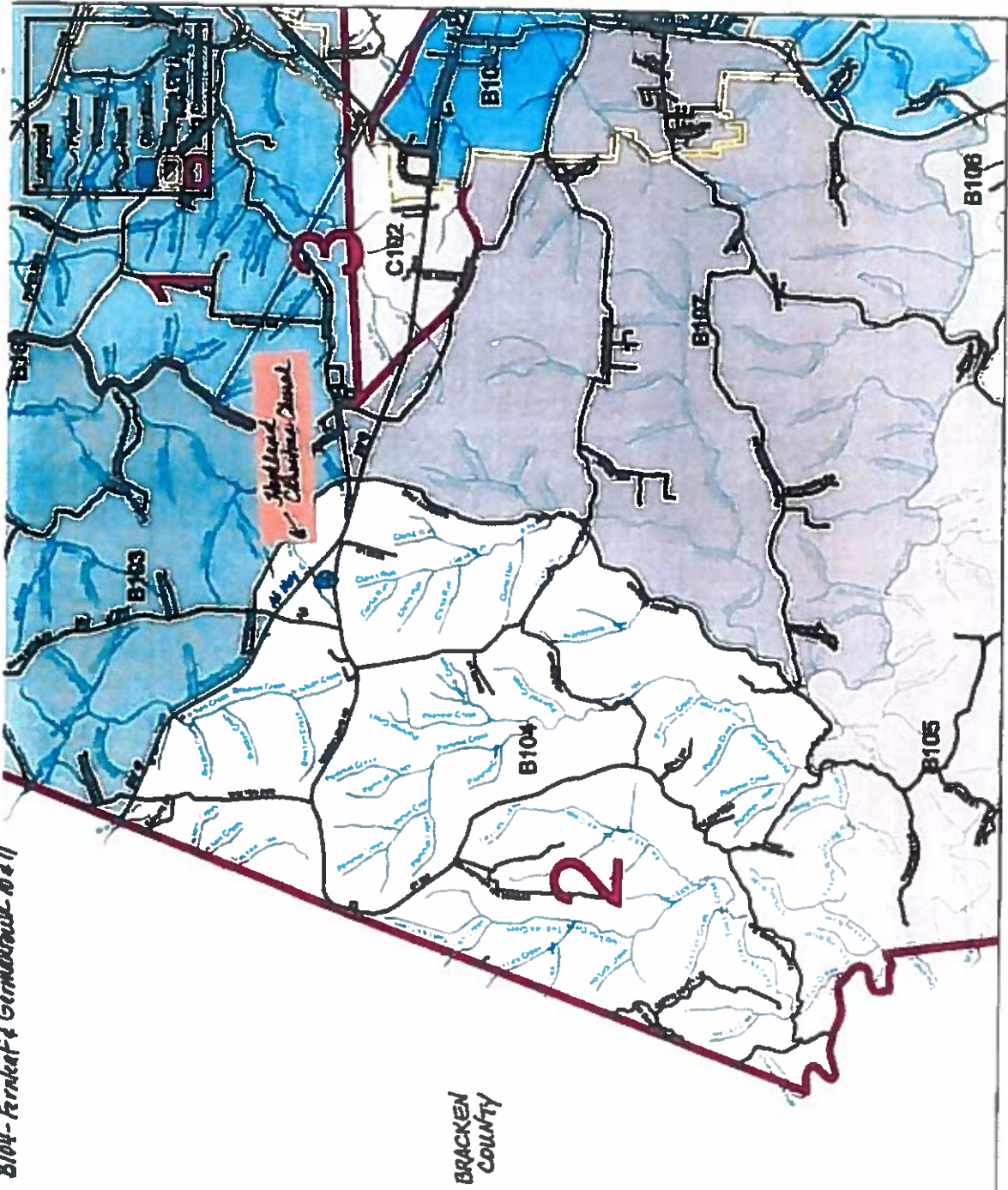
Commonwealth of Kentucky
Petition to Consolidate Precincts and Precinct Election Officers

County Name	
Mason	
Election	Dates of Voting
General	Nov. 7, 2023
Person Completing this Form	
Name	Stephanie G. Schumacher
Title	Mason County Clerk
About Voting Location <i>Example: Tulip Poplar High, 123 Main Street, County High School</i>	
Name	Highland Christian Church
Address	4037 KY 10 - Maysville
Type	Church Hall
Number of Parking Spaces	Sufficient Parking Spaces?
80	Yes
Voting Equipment to be Used	
Number	Type of equipment
1	Verity Scan Machine
1	Verity Duo Standalone Machine
1	Verity Print

Precincts in Voting Location	
Precinct name	Number of registered voters
ALL	13,073

Narrative Plan (please attach additional sheets if needed)
1.) Why is this consolidation of these precincts desirable? <input checked="" type="checkbox"/> This is the same plan used in the last election The church will be used as a vote center and is located in Commissioner District 2, and will be especially convenient to those voters in the western part of the county.
2.) In what manner will Precinct Officers be assigned? <input checked="" type="checkbox"/> This location will be fully staffed with election officials Election officers will be assigned by party and duty at the vote center.
3.) How will the voting location be publicized to voters? How will the location be noted as a "Vote Center?" The vote center will be publicized through the newspaper, radio, tv ads and social media.
4.) How will the voting location serve as a focal point to meet the needs of a diverse community? The church is located off the AA Highway, which is heavily traveled by residents of the county traveling to northern Kentucky to work. This location and ease of access off the AA Highway will serve both those voters who are commuting to work, as well as voters who live in that part of the county.

B104- Ferkel & Germanicus- 10 & 11



BRACKEN COUNTY



4- Highland Church