



Commonwealth of Kentucky

County Election Planning Report

County Name	
MUHLENBERG	
Election	
2023 GENERAL	
Person Completing this Form	
Name	CRYSTAL SMITH
Title	CLERK
Phone	270-338-1441 x3

For in-person voting on Election Day, the County Board of Elections will (check one):

- Consolidate precincts and precinct election officers (Requires Form SBE 74);
- Utilize the same consolidation plan that was used in a previous election (Requires previous Form SBE 74); or
- Open all existing precincts.

Excused in-person absentee voting will occur (check one):

- Within the County Clerk's office; or
- In another location within the county (Requires Form SBE 74).

No-excuse in-person absentee voting will occur (check one):

- Within the County Clerk's office; or
- In another location within the county (Requires Form SBE 74).

Absentee ballot drop-boxes will be located (minimum of one location required):

1ST FLOOR, COURTHOUSE, 100 S MAIN ST. GREENVILLE KY 42345

I have attached:

- All required Form SBE 74 sheets
- Relevant Maps
- Supplemental Narrative


Signature 8-11-23
Date



Commonwealth of Kentucky

Petition to Consolidate Precincts and Precinct Election Officers

County Name	
MUHLENBERG	
Election	Dates of Voting
2023 General	11/02, 11/03, 11/04 and 11/07
Person Completing this Form	
Name	Crystal Smith
Title	CLERK
About Voting Location	
<i>Example: Tulip Poplar High, 123 Main Street, County High School</i>	
Name	Merle Travis Center
Address	750 Cleaton Road, Powderly Ky
Type	Performance Art Theater
Number of Parking Spaces	Sufficient Parking Spaces?
100+	YES
Voting Equipment to be Used	
Number	Type of equipment
3	KNOWINK Poll Pads
3	Print on Demand Printers
3	Verity Scanners

Precincts in Voting Location	
Precinct name	Number of registered voters
All	22,000 +

Narrative Plan <i>(please attach additional sheets if needed)</i>
1.) Why is this consolidation of these precincts desirable? <input type="checkbox"/> This is the same plan used in the last election N/A - FORM COMPLETED FOR EARLY VOTING (NO EXCUSE ABSENTEE) AND ELECTION DAY VOTING CENTER USE
2.) In what manner will Precinct Officers be assigned? <input checked="" type="checkbox"/> This location will be fully staffed with election officials Multiple Clerks, Sheriffs, Ballot and Machine Judges along with a Facility Sheriff, location coordinator and cleaners.
3.) How will the voting location be publicized to voters? How will the location be noted as a "Vote Center?" Early Voting Center (no-excuse absentee) and Vote Center on Election Day.
4.) How will the voting location serve as a focal point to meet the needs of a diverse community? Located in middle of county Equally accessible to all residents Well known location Ample parking and handicap accessibility Coverage for voters in bad weather



Commonwealth of Kentucky

Petition to Consolidate Precincts and Precinct Election Officers

County Name	
MUHLENBERG	
Election	Dates of Voting
11-07-2023	11-07-23
Person Completing this Form	
Name	MELINDA WARD
Title	DEPUTY CLERK
About Voting Location	
<i>Example: Tulip Poplar High, 123 Main Street, County High School</i>	
Name	NATIONAL GUARD ARMORY
Address	501 W Everly Brothers Blvd, Central City
Type	Armory
Number of Parking Spaces	Sufficient Parking Spaces?
50+	YES
Voting Equipment to be Used	
Number	Type of equipment
3	KNOWINK Poll Pads
1	ADA Touch Writer
2	Verity Scans

Precincts in Voting Location	
Precinct name	Number of registered voters
A 102	679
A 104	652
A 106	679

Narrative Plan <i>(please attach additional sheets if needed)</i>
1.) Why is this consolidation of these precincts desirable? <input checked="" type="checkbox"/> This is the same plan used in the last election
2.) In what manner will Precinct Officers be assigned? <input checked="" type="checkbox"/> This location will be fully staffed with election officials
Multiple Clerks, Sheriffs, Ballot and Machine Judges along with a Facility Sheriff, Location Coordinator and Cleaners
3.) How will the voting location be publicized to voters? How will the location be noted as a "Vote Center?"
Mailer identifies each Precinct voting at this location
4.) How will the voting location serve as a focal point to meet the needs of a diverse community?
Location used for over 5+ years. Public likes the location, it's accessibility and layout.



Imagery ©2023 CNES / Airbus, Maxar Technologies, Map data ©2023 50 ft



501 W Everly Brothers Blvd

-  Directions
-  Save
-  Nearby
-  Send to phone
-  Share

 501 W Everly Brothers Blvd, Central City, KY 42330

7VPG+62 Central City, Kentucky

Photos



Commonwealth of Kentucky

Petition to Consolidate Precincts and Precinct Election Officers

County Name	
MUHLENBERG	
Election	Dates of Voting
2023 GENERAL 11-07-23	
Person Completing this Form	
Name	MELINDA WARD
Title	DEPUTY CLERK
About Voting Location	
<i>Example: Tulip Poplar High, 123 Main Street, County High School</i>	
Name	CENTRAL CITY ELEMENTARY SCHOOL
Address	1501 N 2ND ST, Central City Ky
Type	School
Number of Parking Spaces	Sufficient Parking Spaces?
100+	YES
Voting Equipment to be Used	
Number	Type of equipment
4	KNOWINK Poll Pads
1	ADA Touch Writer
2	Verity Scans

Precincts in Voting Location	
Precinct name	Number of registered voters
A 107	696
E 101	530
E 102	512
E 104	1055

Narrative Plan <i>(please attach additional sheets if needed)</i>
1.) Why is this consolidation of these precincts desirable? <input checked="" type="checkbox"/> This is the same plan used in the last election
2.) In what manner will Precinct Officers be assigned? <input checked="" type="checkbox"/> This location will be fully staffed with election officials Multiple Clerks, Sheriffs, Ballot and Machine Judges, along with Facility Sheriff, Location Coordinator, and Cleaners.
3.) How will the voting location be publicized to voters? How will the location be noted as a "Vote Center?" Mailer identifies each precinct voting at this location.
4.) How will the voting location serve as a focal point to meet the needs of a diverse community? Voters have voted at this location for over five (5) years. Public likes the location, it's accessibility and layout.



Imagery ©2023 CNES / Airbus, Maxar Technologies, Map data ©2023 100 ft



1501 N 2nd St

Building



Directions



Save



Nearby



Send to
phone



Share



1501 N 2nd St, Central City, KY 42330



Commonwealth of Kentucky

Petition to Consolidate Precincts and Precinct Election Officers

County Name	
MUHLENBERG	
Election	Dates of Voting
2023 GENERAL	11-07-23
Person Completing this Form	
Name	MELINDA WARD
Title	DEPUTY CLERK
About Voting Location	
<i>Example: Tulip Poplar High, 123 Main Street, County High School</i>	
Name	MUHL S ELEMENTRAY SCHOOL
Address	2005 US Hwy 431 S, Beechmont Ky
Type	School
Number of Parking Spaces	Sufficient Parking Spaces?
100+	YES
Voting Equipment to be Used	
Number	Type of equipment
4	KNOWINK Poll Pads
1	ADA Touch Writer
2	verity Scans

Precincts in Voting Location	
Precinct name	Number of registered voters
B 102	883
B 103	866
B 104	1483
B 105	576

Narrative Plan <i>(please attach additional sheets if needed)</i>
<p>1.) Why is this consolidation of these precincts desirable?</p> <p><input checked="" type="checkbox"/> This is the same plan used in the last election</p>
<p>2.) In what manner will Precinct Officers be assigned?</p> <p><input checked="" type="checkbox"/> This location will be fully staffed with election officials</p> <p>Multiple Clerks, Sheriffs, Ballot and Machine Judges, along with Facility Sheriff, Location Coordinator, and Cleaners.</p>
<p>3.) How will the voting location be publicized to voters? How will the location be noted as a "Vote Center?"</p> <p>Mailer identifies each precinct voting at this location.</p>
<p>4.) How will the voting location serve as a focal point to meet the needs of a diverse community?</p> <p>Voters have voted at this location for over five (5) years. Public likes the location, it's accessibility and layout.</p>



Imagery ©2023 Maxar Technologies, Map data ©2023 100 ft



2005 US-431

Building



Directions



Save



Nearby



Send to
phone



Share



2005 US-431, Beechmont, KY 42323

Photos



Commonwealth of Kentucky

Petition to Consolidate Precincts and Precinct Election Officers

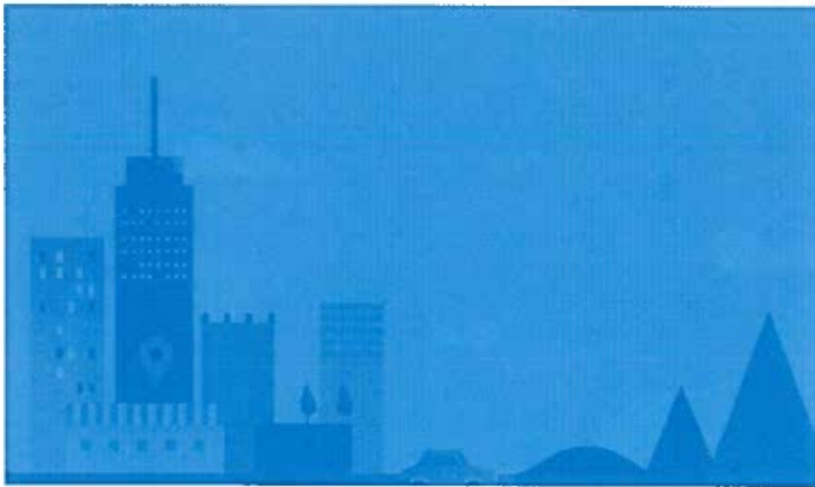
County Name	
MUHLENBERG	
Election	Dates of Voting
11-07-2023	11-07-23
Person Completing this Form	
Name	MELINDA WARD
Title	DEPUTY CLERK
About Voting Location	
<i>Example: Tulip Poplar High, 123 Main Street, County High School</i>	
Name	PARKS AND REC CENTER
Address	200 County Park Drive, Greenville
Type	Sports Recreational Facility
Number of Parking Spaces	Sufficient Parking Spaces?
50+	YES
Voting Equipment to be Used	
Number	Type of equipment
6	KNOWINK Poll Pads
1-2	ADA Touch Writer
4	Verity Scans

Precincts in Voting Location	
Precinct name	Number of registered voters
C 101	1455
C 103	731
C 104	1375
C 106	1298
D 101	1567
D 102	812
D 103	1595
D 104	775

Narrative Plan <i>(please attach additional sheets if needed)</i>
<p>1.) Why is this consolidation of these precincts desirable?</p> <p><input checked="" type="checkbox"/> This is the same plan used in the last election</p>
<p>2.) In what manner will Precinct Officers be assigned?</p> <p><input checked="" type="checkbox"/> This location will be fully staffed with election officials</p> <p>Multiple Clerks, Sheriffs, Ballot and Machine Judges along with a Facility Sheriff, Location Coordinator and Cleaners</p>
<p>3.) How will the voting location be publicized to voters? How will the location be noted as a "Vote Center?"</p> <p>Mailer identifies each Precinct voting at this location</p>
<p>4.) How will the voting location serve as a focal point to meet the needs of a diverse community?</p> <p>Location used for the last few election cycles. Public likes the location, it's accessibility and layout.</p>



Imagery ©2023 CNES / Airbus, Maxar Technologies, Map data ©2023 100 ft



200 County Park Dr

Building



Directions



Save



Nearby



Send to
phone



Share



200 County Park Dr, Greenville, KY 42345

At this place



Commonwealth of Kentucky

Petition to Consolidate Precincts and Precinct Election Officers

County Name	
MUHLENBERG	
Election	Dates of Voting
2023 GENERAL 11-07-23	
Person Completing this Form	
Name	MELINDA WARD
Title	DEPUTY CLERK
About Voting Location	
<i>Example: Tulip Poplar High, 123 Main Street, County High School</i>	
Name	BREMEN ELEMENTARY SCHOOL
Address	5000 Main St, Bremen Ky
Type	School
Number of Parking Spaces	Sufficient Parking Spaces?
100+	YES
Voting Equipment to be Used	
Number	Type of equipment
3	KNOWINK Poll Pads
1	ADA Touch Writer
2	Verity Scans

Precincts in Voting Location	
Precinct name	Number of registered voters
A 103	1364
E 105	942
E 107	332

Narrative Plan <i>(please attach additional sheets if needed)</i>
<p>1.) Why is this consolidation of these precincts desirable?</p> <p><input checked="" type="checkbox"/> This is the same plan used in the last election</p>
<p>2.) In what manner will Precinct Officers be assigned?</p> <p><input checked="" type="checkbox"/> This location will be fully staffed with election officials</p> <p>Multiple Clerks, Sheriffs, Ballot and Machine Judges, along with Facility Sheriff, Location Coordinator, and Cleaners.</p>
<p>3.) How will the voting location be publicized to voters? How will the location be noted as a "Vote Center?"</p> <p>Mailer identifies each precinct voting at this location.</p>
<p>4.) How will the voting location serve as a focal point to meet the needs of a diverse community?</p> <p>Voters have voted at this location for over five (5) years. Public likes the location, it's accessibility and layout.</p>



Imagery ©2023 CNES / Airbus, Maxar Technologies, Map data ©2023 100 ft



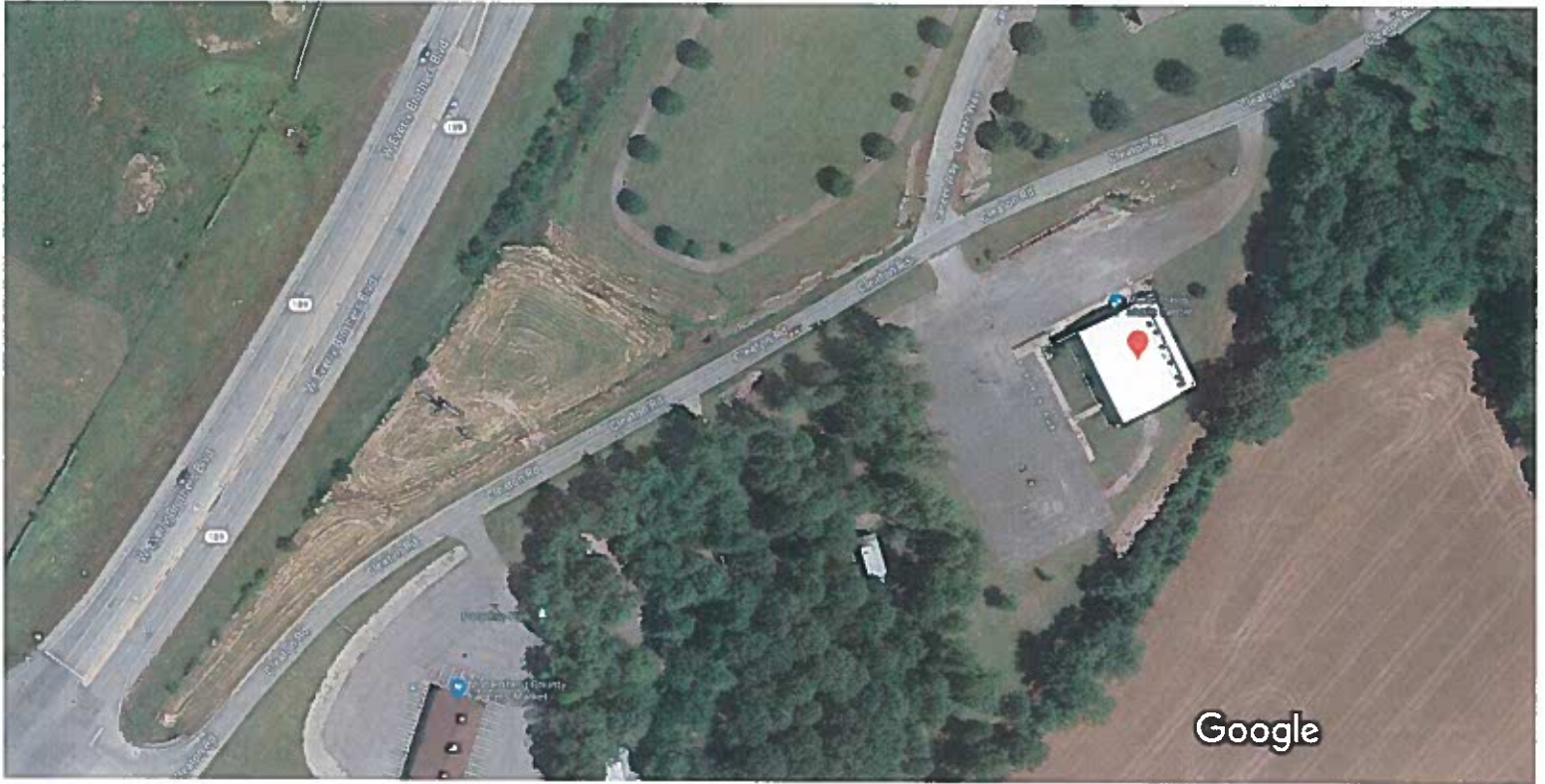
5000 Main St

-  Directions
-  Save
-  Nearby
-  Send to phone
-  Share

 5000 Main St, Bremen, KY 42325

9Q7G+89 Bremen, Kentucky

Photos



Imagery ©2023 CNES / Airbus, Maxar Technologies, Map data ©2023 50 ft



750 Cleaton Rd

Building



Directions



Save



Nearby



Send to
phone

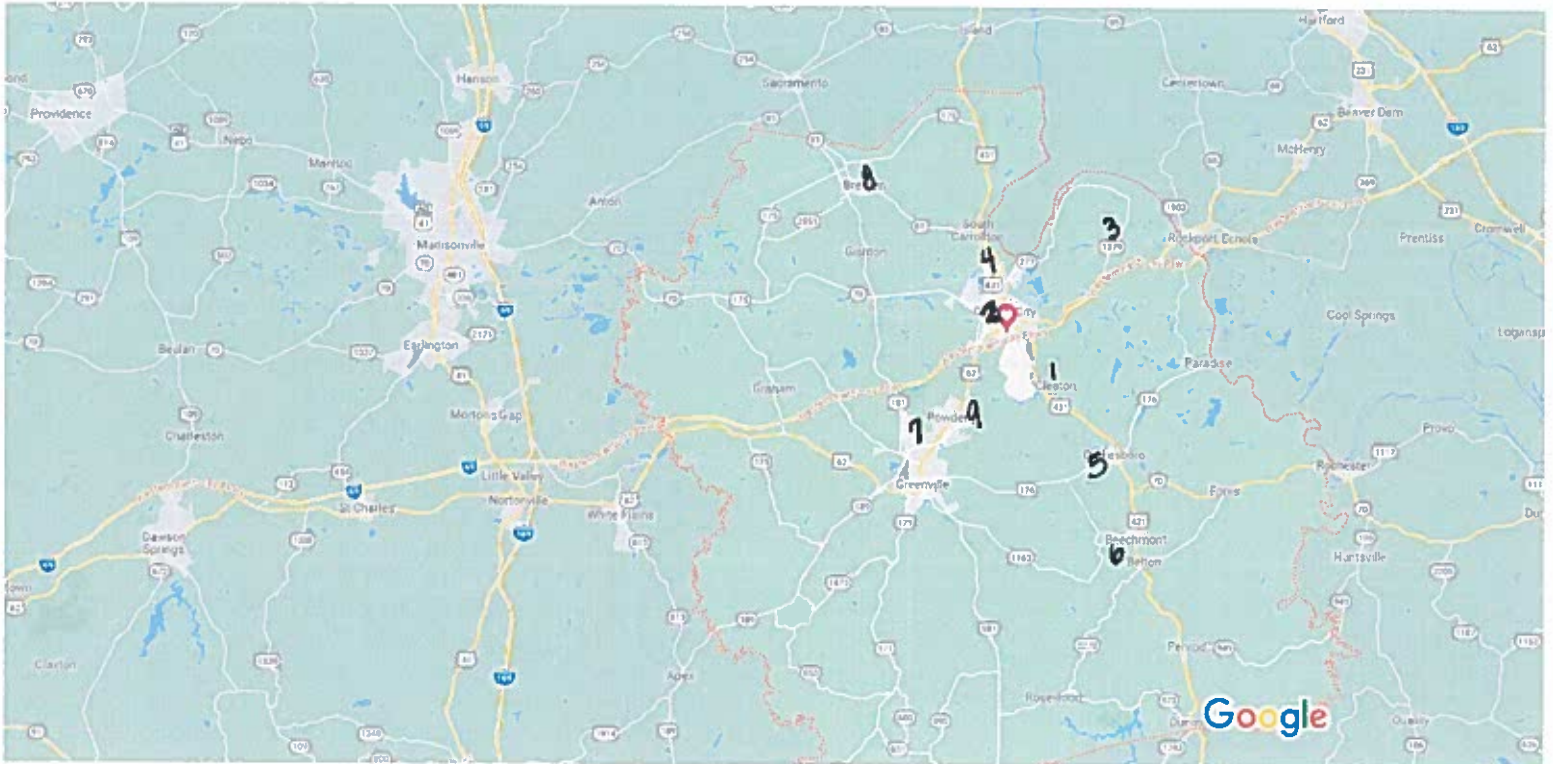


Share



750 Cleaton Rd, Greenville, KY 42345

Photos



Map data ©2023 Google 2 mi



Muhlenberg County

Kentucky



Directions



Save



Nearby



Send to phone



Share

Quick facts

Muhlenberg County is a county in the U.S. Commonwealth of Kentucky. As of the 2020 census, the population was 30,928. Its county seat is Greenville an... [More](#)

Attached is a map with the locations listed as follows:
[These are approximated locations]

1. Cleaton (single)
2. National Guard Armory (consolidated)
3. Nelson Community Center (single)
4. Central City Elementary School (consolidated)
5. Drakesboro (single)
6. Muhlenberg S. Elementary School (consolidated)
7. Parks and Rec Center (consolidated)
8. Bremen Elementary School (consolidated)
9. Merle Travis (Early Voting / Election Day Vote Center)