



**Commonwealth of Kentucky**  
**County Election Planning Report**

<b>County Name</b>	
Spencer	
<b>Election</b>	
2023 General Election	
<b>Person Completing this Form</b>	
Name	Lynn Hesselbrock
Title	County Clerk
Phone	502-477-3215

For in-person voting on Election Day, the County Board of Elections will (check one):

- Consolidate precincts and precinct election officers (Requires Form SBE 74);
- Utilize the same consolidation plan that was used in a previous election (Requires previous Form SBE 74); or
- Open all existing precincts.

Excused in-person absentee voting will occur (check one):

- Within the County Clerk's office; or
- In another location within the county (Requires Form SBE 74).

No-excuse in-person absentee voting will occur (check one):

- Within the County Clerk's office; or
- In another location within the county (Requires Form SBE 74).

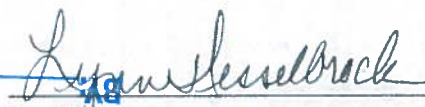
Absentee ballot drop-boxes will be located (minimum of one location required):

2 West Main Street

Front porch of County Clerk Office

I have attached:

- All required Form SBE 74 sheets
- Relevant Maps
- Supplemental Narrative

  
 \_\_\_\_\_  
 Signature Date 7-25-23

RECEIVED

JUL 26 2023









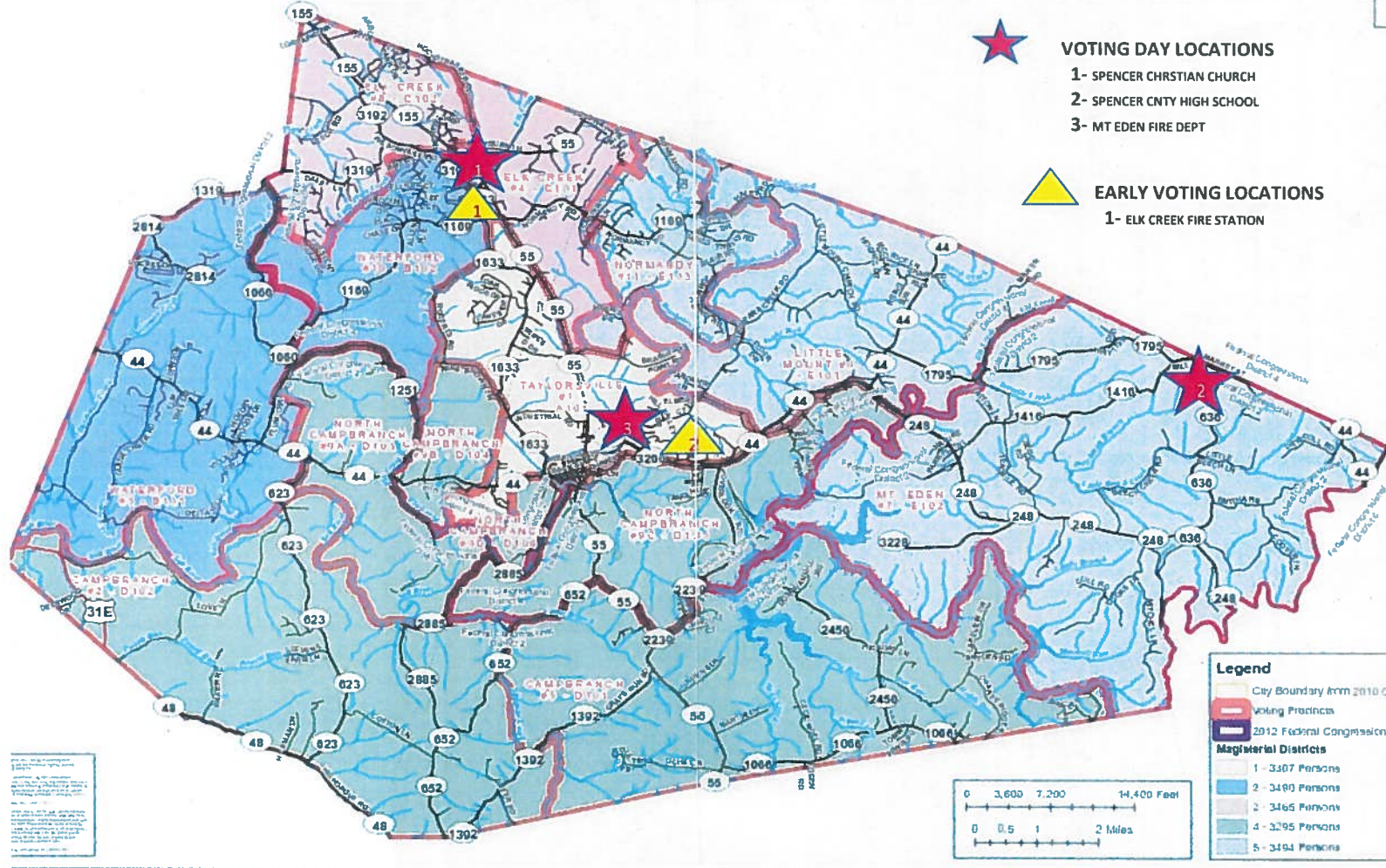












- VOTING DAY LOCATIONS**
- 1- SPENCER CHRSTIAN CHURCH
  - 2- SPENCER CNTY HIGH SCHOOL
  - 3- MT EDEN FIRE DEPT

- EARLY VOTING LOCATIONS**
- 1- ELK CREEK FIRE STATION

**Legend**

- City Boundary from 2010 Census
- Voting Precincts
- 2012 Federal Congressional Magisterial Districts

1 - 3,307 Persons
2 - 3,400 Persons
3 - 3,465 Persons
4 - 3,295 Persons
5 - 3,494 Persons



**RECEIVED**  
 JUL 26 2023  
 BY: