



Commonwealth of Kentucky

County Election Planning Report

County Name	
ANDERSON	
Election	
NOVEMBER 7, 2023	
Person Completing this Form	
Name	JASON DENNY
Title	COUNTY CLERK
Phone	502-839-3041

For in-person voting on Election Day, the County Board of Elections will (check one):

- Consolidate precincts and precinct election officers (Requires Form SBE 74);
- Utilize the same consolidation plan that was used in a previous election (Requires previous Form SBE 74); or
- Open all existing precincts.

Excused in-person absentee voting will occur (check one):

- Within the County Clerk's office; or
- In another location within the county (Requires Form SBE 74).

No-excuse in-person absentee voting will occur (check one):

- Within the County Clerk's office; or
- In another location within the county (Requires Form SBE 74).

Absentee ballot drop-boxes will be located (minimum of one location required):

Anderson County Clerk's Office/Drive-thru 100 South Main Street

Anderson County Clerk's Office/Drive-thru 100 South Main Street

I have attached:

- All required Form SBE 74 sheets
- Relevant Maps
- Supplemental Narrative


Signature

7-20-23
Date



JASON DENNY
ANDERSON COUNTY CLERK
100 SOUTH MAIN STREET
LAWRENCEBURG, KY 40342
PHONE: 502-839-3041 FAX: 502-839-3043

July 17, 2023

Karen Sellers
Richard House
State Board of Elections
100 Walnut Street
Frankfort, KY 40601

I am including this letter with the Vote Center Plan for Anderson County. We thank you for your past support of Vote Centers as they have been very popular in our county. We continually receive praise from the voters, thanking us for the flexibility, ease and added security that Vote Centers allow. Easy to vote and hard to cheat. In the past 8 elections, we have ranked 1st, 2nd, 4th, 5th, 5th again, 7th, 9th, and 25th (no primary candidates). We are asking to add one Vote Center for the November General Election in addition to the three Vote Centers that are currently in use. Even though we don't expect the need this fall for the additional facility, we are proposing to open the Emma B. Ward Elementary School in preparation for the 2024 Election due to the anticipated high turnout. In doing this we add the ability to process 200-250 additional voters per hour. Our plans have worked well since 2020 and our board, my staff and I all agree that the adjusted plan will be more than sufficient for the future.

As always, feel free to contact me with any questions or comments at 502-839-3041 or my cell at 502-680-0878.

Sincerely,

A handwritten signature in blue ink that reads "Jason Denny". The signature is fluid and cursive.

Jason Denny



Commonwealth of Kentucky

Petition to Consolidate Precincts and Precinct Election Officers

County Name	
Anderson	
Election	Dates of Voting
General-11/2, 11/3, 11/4, 11/7	
Person Completing this Form	
Name	Jason Denny
Title	County Clerk
About Voting Location	
<i>Example: Tulip Poplar High, 123 Main Street, County High School</i>	
Name	City Maintenance Building
Address	1500 Maintenance Dr
Type	Drive-thru Facility
Number of Parking Spaces	Sufficient Parking Spaces?
200	Yes
Voting Equipment to be Used	
Number	Type of equipment
8	Verity Scan Units
1	Verity DUO (ADA) Marking Devices
8	Print on Demands

Precincts in Voting Location	
Precinct name	Number of registered voters

Narrative Plan (please attach additional sheets if needed)

1.) Why is this consolidation of these precincts desirable?
 This is the same plan used in the last election

This facility is the most popular location among our voters due to the ease of access and convenience. Approximately 62% of our voters utilized this option during early voting and election day. We can process 200-250 voters per hour at his location.

2.) In what manner will Precinct Officers be assigned?
 This location will be fully staffed with election officials

We have and will continue to train an adequate number of election officers to check in voters, distribute ballots, assist voters, and answer questions efficiently.

3.) How will the voting location be publicized to voters? How will the location be noted as a "Vote Center?"

We utilize the newspaper, social media, mailers, and portable signage to inform the voters of dates, times, and locations.

4.) How will the voting location serve as a focal point to meet the needs of a diverse community?

Utilizing vote centers in Anderson County has significantly reduced the confusion both for early and election day voting. All voters can cast their ballot at any of the approved sites. Therefore, eliminating the need to send voters elsewhere. Having check in stations at each vote center that can process any voter in the county, has proven to be beneficial since 2020. This facility has more than adequate entry and exit points.



Commonwealth of Kentucky

Petition to Consolidate Precincts and Precinct Election Officers

County Name	
Anderson	
Election	Dates of Voting
General-11/2, 11/3, 11/4, 11/7	
Person Completing this Form	
Name	Jason Denny
Title	County Clerk
About Voting Location	
<i>Example: Tullip Poplar High, 123 Main Street, County High School</i>	
Name	Anderson County Community Building
Address	1026 County Park Rd-Basement
Type	Walk-in Facility
Number of Parking Spaces	Sufficient Parking Spaces?
322	Yes
Voting Equipment to be Used	
Number	Type of equipment
2	Verity Scan Units
1	Verity DUO (ADA) Marking Devices
3	Print on Demands

Precincts in Voting Location	
Precinct name	Number of registered voters

Narrative Plan <i>(please attach additional sheets if needed)</i>
<p>1.) Why is this consolidation of these precincts desirable?</p> <p><input checked="" type="checkbox"/> This is the same plan used in the last election</p> <p>This facility is popular due to the ease of access and convenience. Approximately 20% of our voters utilized this option during early voting and election day. We can process 100 to 150 voters per hour at this location.</p>
<p>2.) In what manner will Precinct Officers be assigned?</p> <p><input checked="" type="checkbox"/> This location will be fully staffed with election officials</p> <p>We have and will continue to train an adequate number of election officers to check in voters, distribute ballots, assist voters, and answer questions efficiently.</p>
<p>3.) How will the voting location be publicized to voters? How will the location be noted as a "Vote Center?"</p> <p>We utilize the newspaper, social media, mailers, and portable signage to inform the voters of dates, times, and locations.</p>
<p>4.) How will the voting location serve as a focal point to meet the needs of a diverse community?</p> <p>Utilizing vote centers in Anderson County has significantly reduced the confusion both for early and election day voting. All voters can cast their ballot at any of the approved sites. Therefore, eliminating the need to send voters elsewhere. Having check in stations at each vote center that can process any voter in the county, has proven to be beneficial since 2020. This facility has more than adequate entry and exit points.</p>



Commonwealth of Kentucky

Petition to Consolidate Precincts and Precinct Election Officers

County Name	
Election	Dates of Voting
Person Completing this Form	
Name	
Title	
About Voting Location	
<i>Example: Tulip Poplar High, 123 Main Street, County High School</i>	
Name	
Address	
Type	
Number of Parking Spaces	Sufficient Parking Spaces?
Voting Equipment to be Used	
Number	Type of equipment

Precincts in Voting Location	
Precinct name	Number of registered voters

Narrative Plan <i>(please attach additional sheets if needed)</i>
<p>1.) Why is this consolidation of these precincts desirable?</p> <p><input type="checkbox"/> This is the same plan used in the last election</p> <div style="border: 1px solid black; height: 60px; margin-top: 5px;"></div>
<p>2.) In what manner will Precinct Officers be assigned?</p> <p><input type="checkbox"/> This location will be fully staffed with election officials</p> <div style="border: 1px solid black; height: 60px; margin-top: 5px;"></div>
<p>3.) How will the voting location be publicized to voters? How will the location be noted as a "Vote Center?"</p> <div style="border: 1px solid black; height: 30px; margin-top: 5px;"></div>
<p>4.) How will the voting location serve as a focal point to meet the needs of a diverse community?</p> <div style="border: 1px solid black; height: 60px; margin-top: 5px;"></div>



Commonwealth of Kentucky

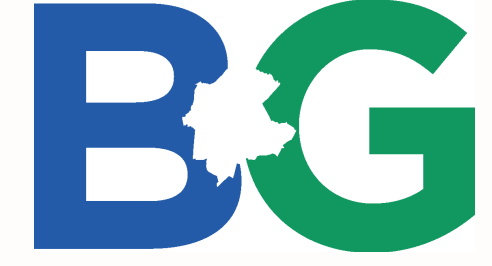
Petition to Consolidate Precincts and Precinct Election Officers

County Name	
Anderson	
Election	Dates of Voting
General-11/7	
Person Completing this Form	
Name	Jason Denny
Title	County Clerk
About Voting Location	
<i>Example: Tulip Poplar High, 123 Main Street, County High School</i>	
Name	Anderson County Middle School
Address	1 Mustang Trail
Type	Walk-in Facility
Number of Parking Spaces	Sufficient Parking Spaces?
258	Yes
Voting Equipment to be Used	
Number	Type of equipment
3	Verity Scan Units
1	Verity DUO (ADA) Marking Devices
5	Print on Demands

Precincts in Voting Location	
Precinct name	Number of registered voters

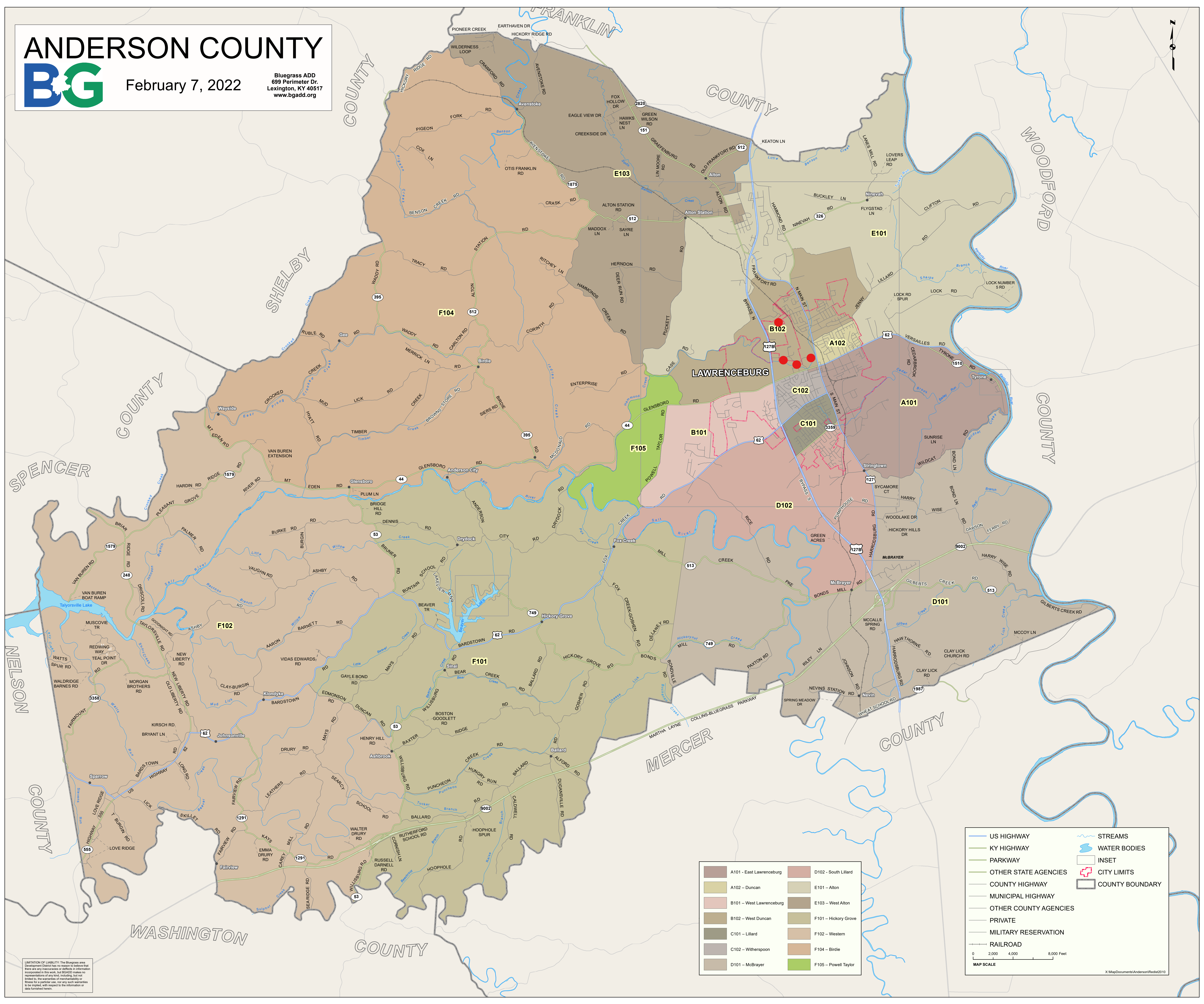
Narrative Plan <i>(please attach additional sheets if needed)</i>
<p>1.) Why is this consolidation of these precincts desirable?</p> <p><input checked="" type="checkbox"/> This is the same plan used in the last election</p> <p>This facility is popular due to the ease of access and convenience. Approximately 20% of our voters utilized this option during election day. We can process 200 to 250 voters per hour at this location.</p>
<p>2.) In what manner will Precinct Officers be assigned?</p> <p><input checked="" type="checkbox"/> This location will be fully staffed with election officials</p> <p>We have and will continue to train an adequate number of election officers to check in voters, distribute ballots, assist voters, and answer questions efficiently.</p>
<p>3.) How will the voting location be publicized to voters? How will the location be noted as a "Vote Center?"</p> <p>We utilize the newspaper, social media, mailers, and portable signage to inform the voters of dates, times, and locations.</p>
<p>4.) How will the voting location serve as a focal point to meet the needs of a diverse community?</p> <p>Utilizing vote centers in Anderson County has significantly reduced the confusion both for early and election day voting. All voters can cast their ballot at any of the approved sites. Therefore, eliminating the need to send voters elsewhere. Having check in stations at each vote center that can process any voter in the county, has proven to be beneficial since 2020. This facility has more than adequate entry and exit points.</p>

ANDERSON COUNTY



February 7, 2022

Bluegrass ADD
699 Perimeter Dr.
Lexington, KY 40517
www.bgadd.org



A101 - East Lawrenceburg	D102 - South Lillard
A102 - Duncan	E101 - Alton
B101 - West Lawrenceburg	E103 - West Alton
B102 - West Duncan	F101 - Hickory Grove
C101 - Lillard	F102 - Western
C102 - Witherspoon	F104 - Birdie
D101 - McBrayer	F105 - Powell Taylor

US HIGHWAY
KY HIGHWAY
PARKWAY
OTHER STATE AGENCIES
COUNTY HIGHWAY
MUNICIPAL HIGHWAY
OTHER COUNTY AGENCIES
PRIVATE
MILITARY RESERVATION
RAILROAD

STREAMS
WATER BODIES
INSET
CITY LIMITS
COUNTY BOUNDARY

0 2,000 4,000 8,000 Feet
MAP SCALE

X:\Map\Documents\Anderson\Readings\2010

LIMITATION OF LIABILITY: The Bluegrass area Development District has no reason to believe that there are any inaccuracies or omissions in information incorporated in this work, but BGADD makes no representation of any kind, including, but not limited to, the accuracy of measurements or data furnished herein.