



# Commonwealth of Kentucky

## County Election Planning Report

<b>County Name</b>	
BULLITT	
<b>Election</b>	
GENERAL ELECTION NOVEMBER 7TH 2023	
<b>Person Completing this Form</b>	
Name	KEVIN MOONEY
Title	COUNTY CLERK
Phone	502-543-2513 EXT 201

**For in-person voting on Election Day, the County Board of Elections will (check one):**

- Consolidate precincts and precinct election officers (Requires Form SBE 74);
- Utilize the same consolidation plan that was used in a previous election (Requires previous Form SBE 74); or
- Open all existing precincts.

**Excused in-person absentee voting will occur (check one):**

- Within the County Clerk's office; or
- In another location within the county (Requires Form SBE 74).

**No-excuse in-person absentee voting will occur (check one):**

- Within the County Clerk's office; or
- In another location within the county (Requires Form SBE 74).

**Absentee ballot drop-boxes will be located (minimum of one location required):**

149 N. WALNUT STREET SHEPHERDSVILLE KY 40165

**I have attached:**

- All required Form SBE 74 sheets
- Relevant Maps
- Supplemental Narrative

  
Signature

8/2/23  
Date



# PQCC

Write a description for your map.

## Legend

- 📍 149 Walnut St
- 🟩 AG
- 🟤 B-1
- 🔴 B-2
- 🟡 C
- 🟦 FN
- 🟦 IG
- 🟦 HL
- 📌 Nina Mooney Annex
- 🟩 R-1
- 🟩 R-2
- 🟨 R-3
- 🟧 R-4
- 🟦 SPLIT
- 🟦 SR

395 Paroquet Springs Dr





# BCHS

Write a description for your map.

## Legend

- 📍 149 Walnut St
- 🟢 AG
- 🟤 B-1
- 🟥 B-2
- 🟡 C
- 🟣 FN
- 🟠 I-G
- 🟦 HL
- 📌 Nina Mooney Annex
- 🟩 R-1
- 🟨 R-2
- 🟧 R-3
- 🟦 R-4
- 🟩 SPLIT
- 🟢 SR

📍 1330 Hwy 44 E



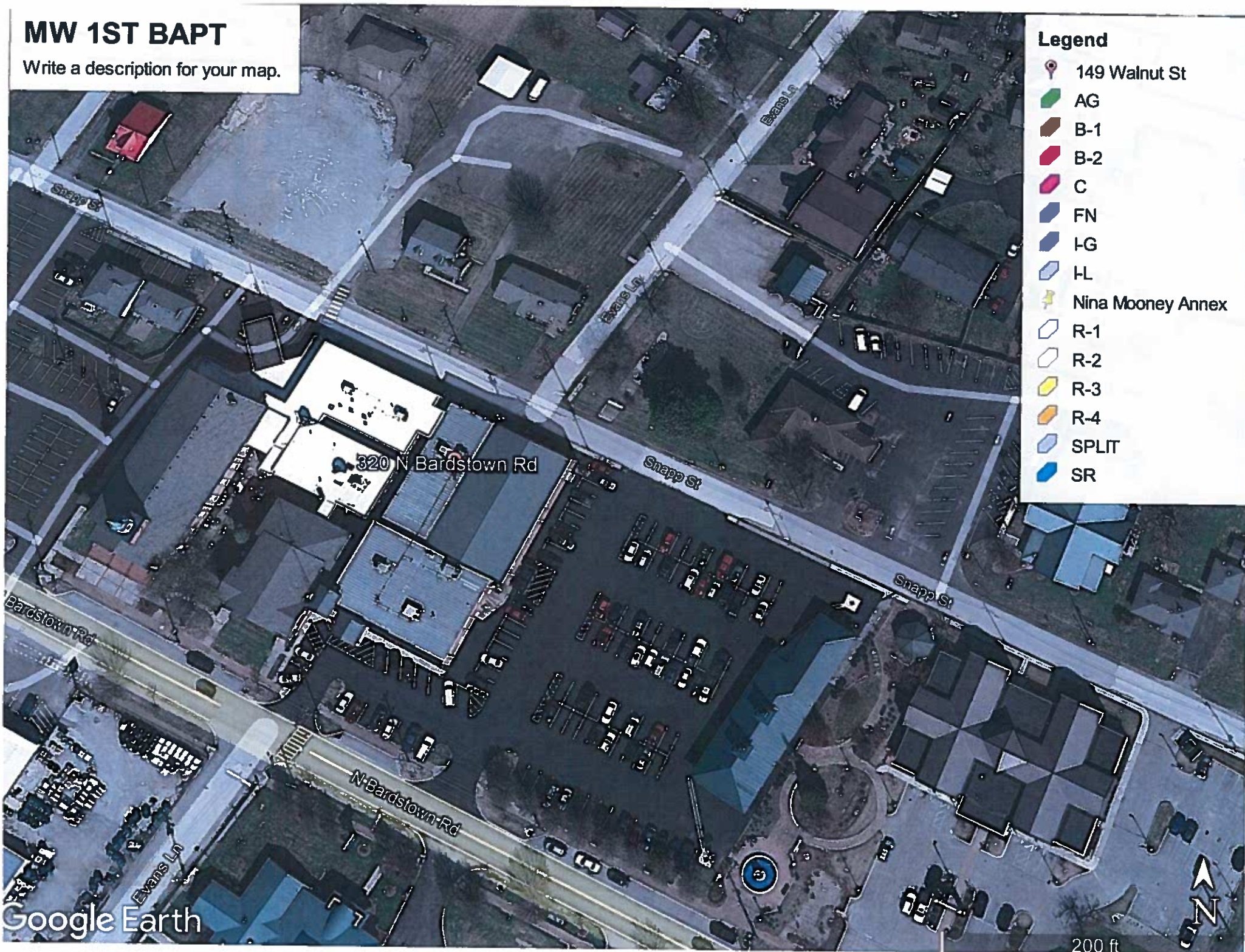


# MW 1ST BAPT

Write a description for your map.

## Legend

- 📍 149 Walnut St
- 🟢 AG
- 🟤 B-1
- 🟡 B-2
- 🟠 C
- 🟣 FN
- 🟦 I-G
- 🟩 HL
- 📌 Nina Mooney Annex
- 🟨 R-1
- 🟪 R-2
- 🟫 R-3
- 🟬 R-4
- 🟭 SPLIT
- 🟮 SR



Google Earth

200 ft




















# BEHS

Write a description for your map.

## Legend

-  149 Walnut St
-  AG
-  B-1
-  B-2
-  C
-  FN
-  I-G
-  HL
-  Nina Mooney Annex
-  R-1
-  R-2
-  R-3
-  R-4
-  SPLIT
-  SR

11450 KY-44

Old Mill Rd

Bluegrass Way

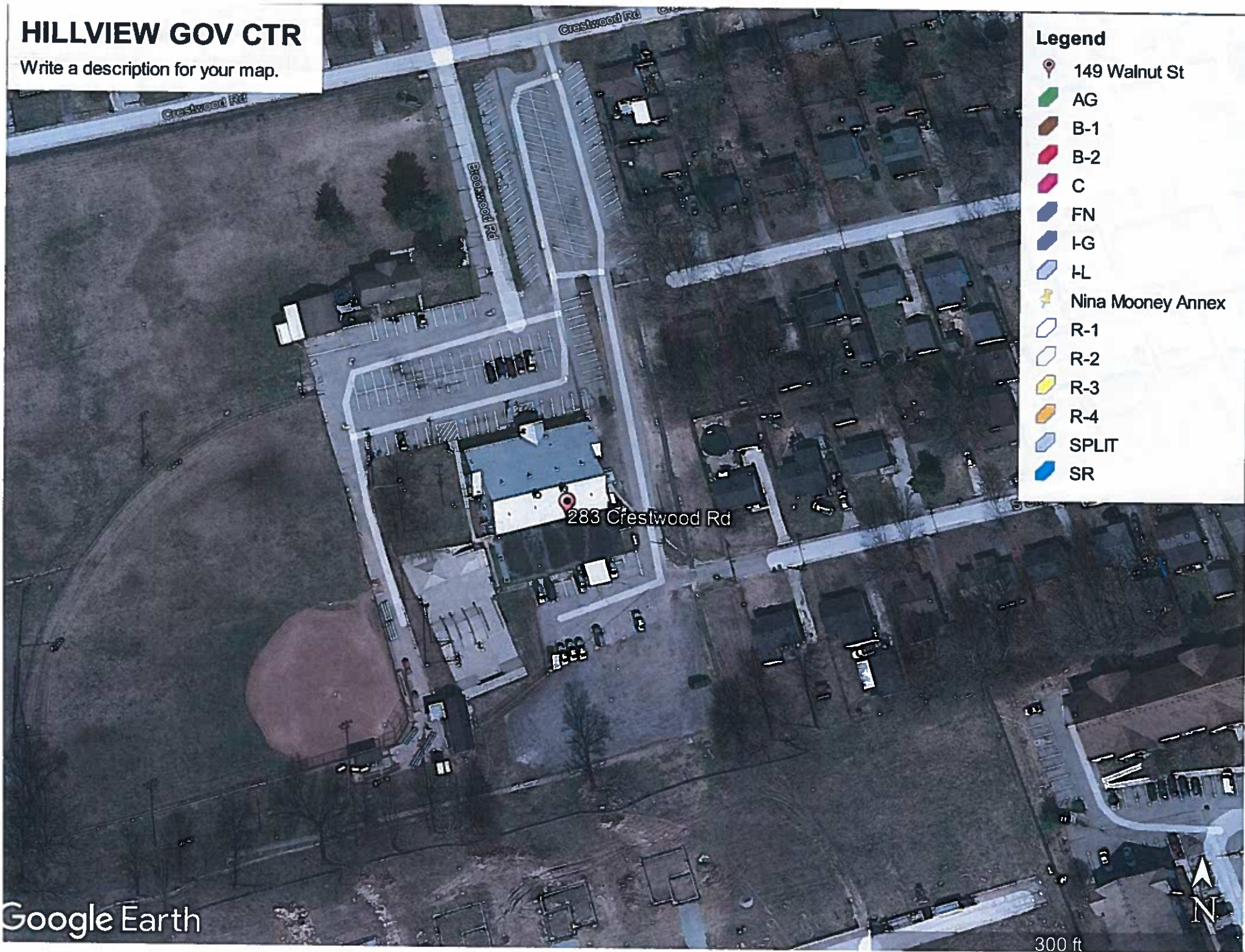


300 ft



# HILLVIEW GOV CTR

Write a description for your map.



- Legend**
- 📍 149 Walnut St
  - 🟢 AG
  - 🟠 B-1
  - 🔴 B-2
  - 🟡 C
  - 🟠 FN
  - 🟠 LG
  - 🟠 HL
  - 📌 Nina Mooney Annex
  - 🟠 R-1
  - 🟠 R-2
  - 🟡 R-3
  - 🟠 R-4
  - 🟠 SPLIT
  - 🟠 SR

283 Crestwood Rd



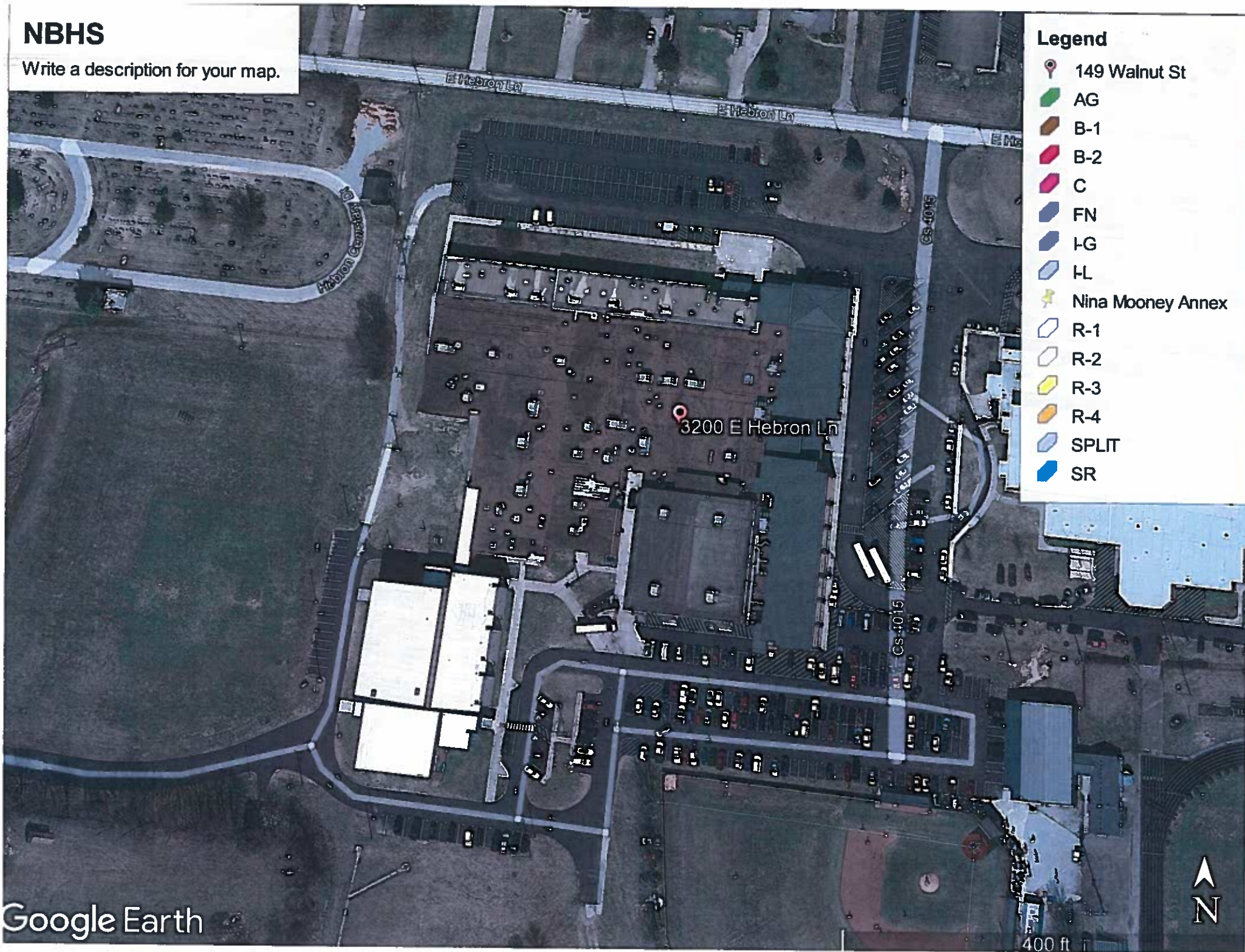


# NBHS

Write a description for your map.

## Legend

- 📍 149 Walnut St
- 🟢 AG
- 🟤 B-1
- 🟥 B-2
- 🟡 C
- 🟦 FN
- 🟩 I-G
- 🟨 L
- 📌 Nina Mooney Annex
- 🟩 R-1
- 🟨 R-2
- 🟨 R-3
- 🟡 R-4
- 🟦 SPLIT
- 🟢 SR





# LJES

Write a description for your map.

## Legend

- 📍 149 Walnut St
- AG
- B-1
- B-2
- C
- FN
- IG
- HL
- 📍 Nina Mooney Annex
- R-1
- R-2
- R-3
- R-4
- SPLIT
- SR



Google Earth



300 ft



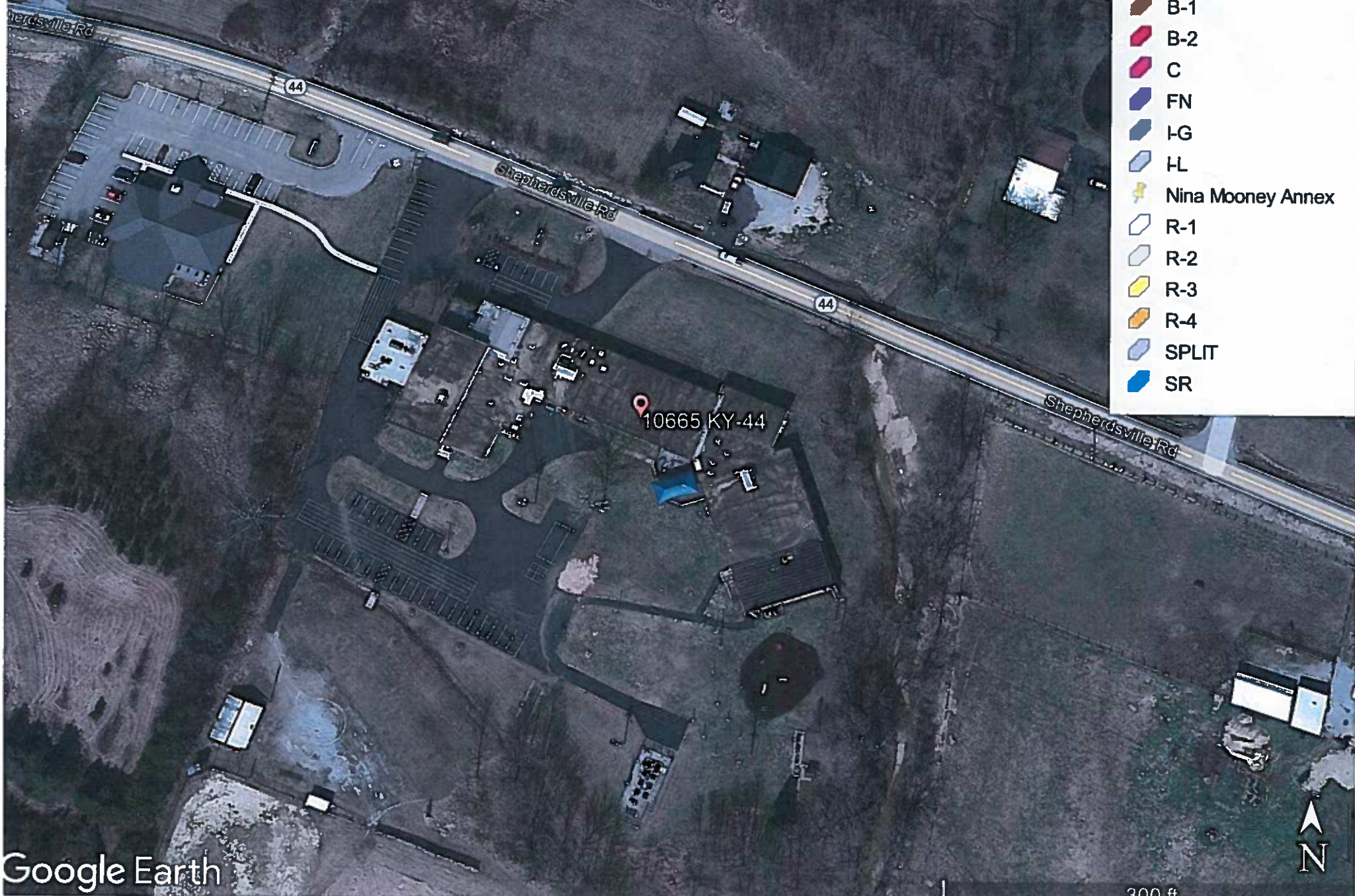


NES

Write a description for your map.

Legend

- 📍 149 Walnut St
- 🟢 AG
- 🟤 B-1
- 🔴 B-2
- 🟡 C
- 🟠 FN
- 🟣 I-G
- 🟦 HL
- 📌 Nina Mooney Annex
- 🏠 R-1
- 🏠 R-2
- 🏠 R-3
- 🏠 R-4
- 🏠 SPLIT
- 🏠 SR



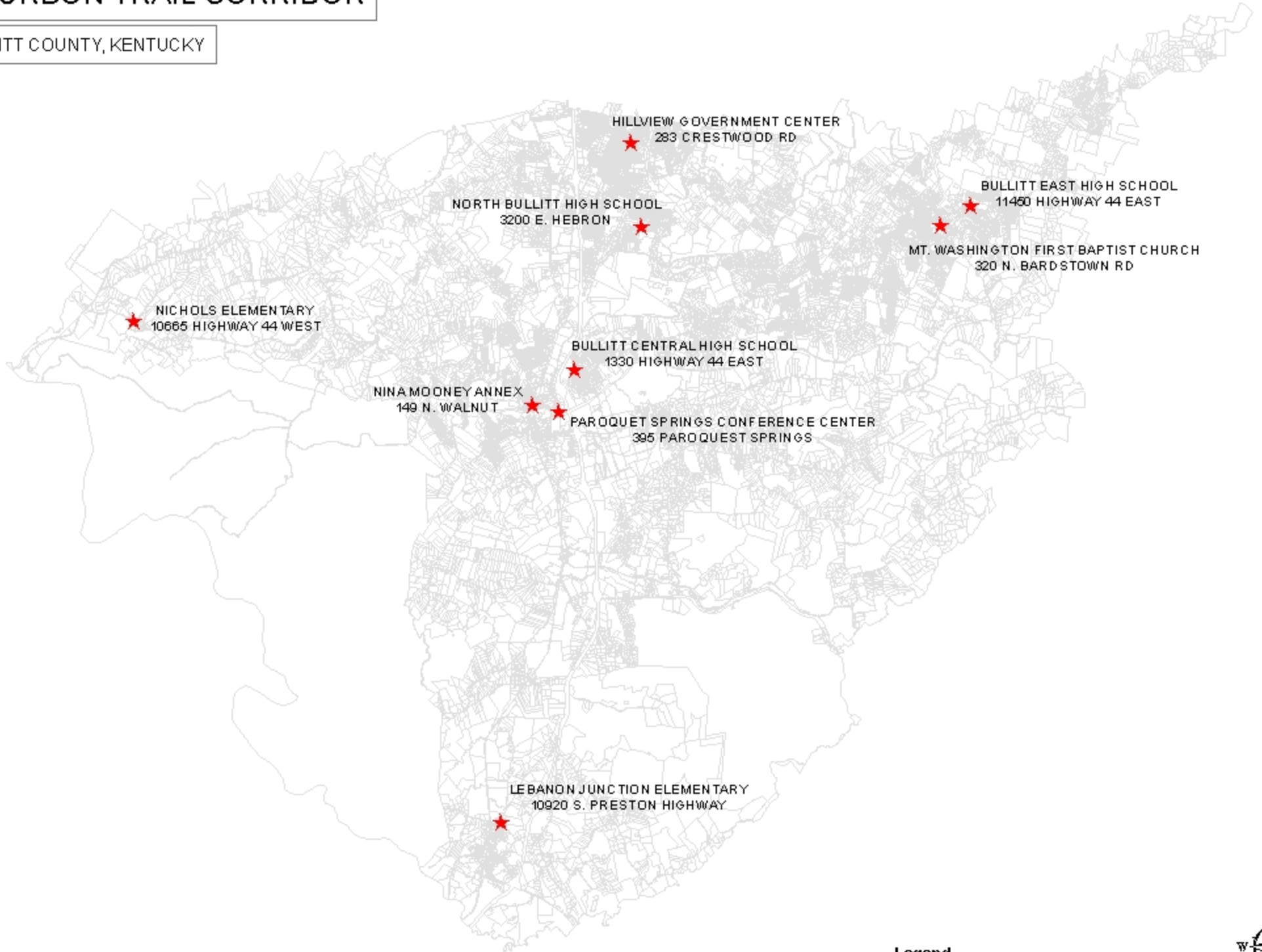
Google Earth

300 ft



# BOURBON TRAIL CORRIDOR

BULLITT COUNTY, KENTUCKY



## Legend

★ Polling Locations

