



Commonwealth of Kentucky County Election Planning Report

County Name	
Clinton	
Election	
November 7th, 2023 General Election	
Person Completing this Form	
Name	Nathan Collins
Title	County Clerk
Phone	606-387-5943

For in-person voting on Election Day, the County Board of Elections will (check one):

- Consolidate precincts and precinct election officers (Requires Form SBE 74);
- Utilize the same consolidation plan that was used in a previous election (Requires previous Form SBE 74); or
- Open all existing precincts.

Excused in-person absentee voting will occur (check one):

- Within the County Clerk's office; or
- In another location within the county (Requires Form SBE 74).

No-excuse in-person absentee voting will occur (check one):

- Within the County Clerk's office; or
- In another location within the county (Requires Form SBE 74).

Absentee ballot drop-boxes will be located (minimum of one location required):

Clinton County Clerk's Office

I have attached:

- All required Form SBE 74 sheets
- Relevant Maps
- Supplemental Narrative

Nathan Collins 8-2-2023
Signature Date



Commonwealth of Kentucky

Petition to Consolidate Precincts and Precinct Election Officers

County Name	
CLINTON	
Election	Dates of Voting
November 7th, 2023 General Election - November 2nd, 3rd, 4th, 7th	
Person Completing this Form	
Name	Nathan Collins
Title	Clinton County Clerk
About Voting Location	
<i>Example: Tulip Poplar High, 123 Main Street, County High School</i>	
Name	Clinton County Community Center
Address	110 Spring St
Type	Community Center
Number of Parking Spaces	Sufficient Parking Spaces?
25	Yes
Voting Equipment to be Used	
Number	Type of equipment
2	DS200
6	expressVote

Precincts in Voting Location	
Precinct name	Number of registered voters
All Precincts	7453

Narrative Plan <i>(please attach additional sheets if needed)</i>
<p>1.) Why is this consolidation of these precincts desirable? <input checked="" type="checkbox"/> This is the same plan used in the last election</p> <p>This is a centralized location with sufficient handicap accessible parking. This is a more cost efficient location as well as being more spacious for voters and for Precinct Officers.</p>
<p>2.) In what manner will Precinct Officers be assigned? <input checked="" type="checkbox"/> This location will be fully staffed with election officials</p> <p>Precinct officers from a variety of precincts will be chosen for this location. There will be 6-8 Precinct Officers assigned to this location.</p>
<p>3.) How will the voting location be publicized to voters? How will the location be noted as a "Vote Center?"</p> <p>This location will be advertised as a "Voting Center." It will be advertised in the local newspaper, on my County Clerk Facebook page, and with our local radio station.</p>
<p>4.) How will the voting location serve as a focal point to meet the needs of a diverse community?</p> <p>This location offers much needed parking, handicap accessibility, and more space to socially distance compared to previous precinct voting houses.</p>



Commonwealth of Kentucky

Petition to Consolidate Precincts and Precinct Election Officers

County Name	
CLINTON	
Election	Dates of Voting
November 7th, 2023 General Election - November 2nd, 3rd, 4th, 7th	
Person Completing this Form	
Name	Nathan Collins
Title	Clinton County Clerk
About Voting Location	
<i>Example: Tulip Poplar High, 123 Main Street, County High School</i>	
Name	South Kentucky RECC
Address	715 Snow Rd
Type	Electric Company Rec Room
Number of Parking Spaces	Sufficient Parking Spaces?
50	Yes
Voting Equipment to be Used	
Number	Type of equipment
2	DS200
6	expressVote

Precincts in Voting Location	
Precinct name	Number of registered voters
All Precincts	7453

Narrative Plan <i>(please attach additional sheets if needed)</i>
<p>1.) Why is this consolidation of these precincts desirable? <input checked="" type="checkbox"/> This is the same plan used in the last election</p> <p>This is a centralized location primarily serving the northern portion of Clinton County with sufficient handicap accessible parking. This is a more cost efficient location as well as being more spacious for voters and for Precinct Officers.</p>
<p>2.) In what manner will Precinct Officers be assigned? <input checked="" type="checkbox"/> This location will be fully staffed with election officials</p> <p>Precinct officers from a variety of precincts will be chosen for this location. There will be 6-8 Precinct Officers assigned to this location.</p>
<p>3.) How will the voting location be publicized to voters? How will the location be noted as a "Vote Center?"</p> <p>This location will be advertised as a "Voting Center." It will be advertised in the local newspaper, on my County Clerk Facebook page, and with our local radio station.</p>
<p>4.) How will the voting location serve as a focal point to meet the needs of a diverse community?</p> <p>This location offers much needed parking, handicap accessibility, and more space to socially distance compared to previous precinct voting houses. This location is at the intersection of the two major state highways going through Clinton County.</p>



Commonwealth of Kentucky

Petition to Consolidate Precincts and Precinct Election Officers

County Name	
CLINTON	
Election	Dates of Voting
November 7th, 2023 General Election - November 2nd, 3rd, 4th, 7th	
Person Completing this Form	
Name	Nathan Collins
Title	Clinton County Clerk
About Voting Location	
<i>Example: Tulip Poplar High, 123 Main Street, County High School</i>	
Name	Clinton County Welcome Center
Address	28 Welcome Center Drive
Type	Welcome Center
Number of Parking Spaces	Sufficient Parking Spaces?
50	Yes
Voting Equipment to be Used	
Number	Type of equipment
2	DS200
6	expressVote

Precincts in Voting Location	
Precinct name	Number of registered voters
All Precincts	7453

Narrative Plan <i>(please attach additional sheets if needed)</i>
<p>1.) Why is this consolidation of these precincts desirable?</p> <p><input checked="" type="checkbox"/> This is the same plan used in the last election</p> <p>This is a centralized location with sufficient handicap accessible parking. This is a more cost efficient location as well as being more spacious for voters and for Precinct Officers.</p>
<p>2.) In what manner will Precinct Officers be assigned?</p> <p><input checked="" type="checkbox"/> This location will be fully staffed with election officials</p> <p>Precinct officers from a variety of precincts will be chosen for this location. There will be 6-8 Precinct Officers assigned to this location.</p>
<p>3.) How will the voting location be publicized to voters? How will the location be noted as a "Vote Center?"</p> <p>This location will be advertised as a "Voting Center." It will be advertised in the local newspaper, on my County Clerk Facebook page, and with our local radio station.</p>
<p>4.) How will the voting location serve as a focal point to meet the needs of a diverse community?</p> <p>This location offers much needed parking, handicap accessibility, and more space to socially distance compared to previous precinct voting houses.</p>

CLINTON COUNTY 2023 MAGISTERIAL DISTRICTS



Legend

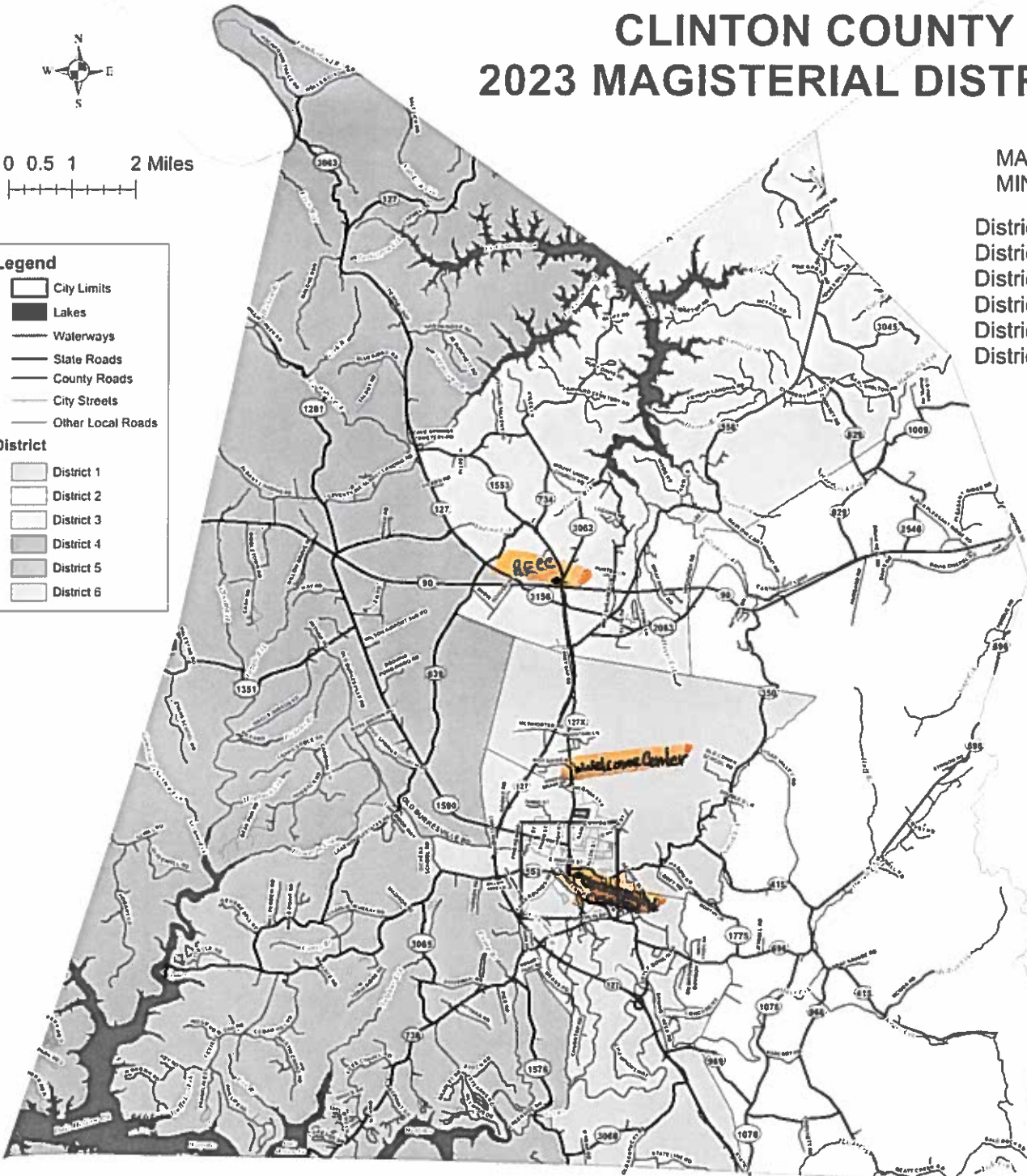
- City Limits
- Lakes
- Waterways
- State Roads
- County Roads
- City Streets
- Other Local Roads

District

- District 1
- District 2
- District 3
- District 4
- District 5
- District 6

MAX: 1,611
MIN: 1,473

District 1: 1,556
District 2: 1,548
District 3: 1,611
District 4: 1,504
District 5: 1,473
District 6: 1,561



Map prepared by Lake Cumberland Area Development District