



# Commonwealth of Kentucky

## County Election Planning Report

<b>County Name</b>	
Montgomery County	
<b>Election</b>	
2023 General	
<b>Person Completing this Form</b>	
Name	Chris Cockrell
Title	County Clerk
Phone	859 498 8700

**For in-person voting on Election Day, the County Board of Elections will (check one):**

- Consolidate precincts and precinct election officers (Requires Form SBE 74);
- Utilize the same consolidation plan that was used in a previous election (Requires previous Form SBE 74); or
- Open all existing precincts.

**Excused in-person absentee voting will occur (check one):**

- Within the County Clerk's office; or
- In another location within the county (Requires Form SBE 74).

**No-excuse in-person absentee voting will occur (check one):**

- Within the County Clerk's office; or
- In another location within the county (Requires Form SBE 74).

**Absentee ballot drop-boxes will be located (minimum of one location required):**

Montgomery County Courthouse

1 Court St. Suite #2 Mt. Sterling Ky 40353

**I have attached:**

- All required Form SBE 74 sheets
- Relevant Maps
- Supplemental Narrative

 07/21/23  
Signature Date











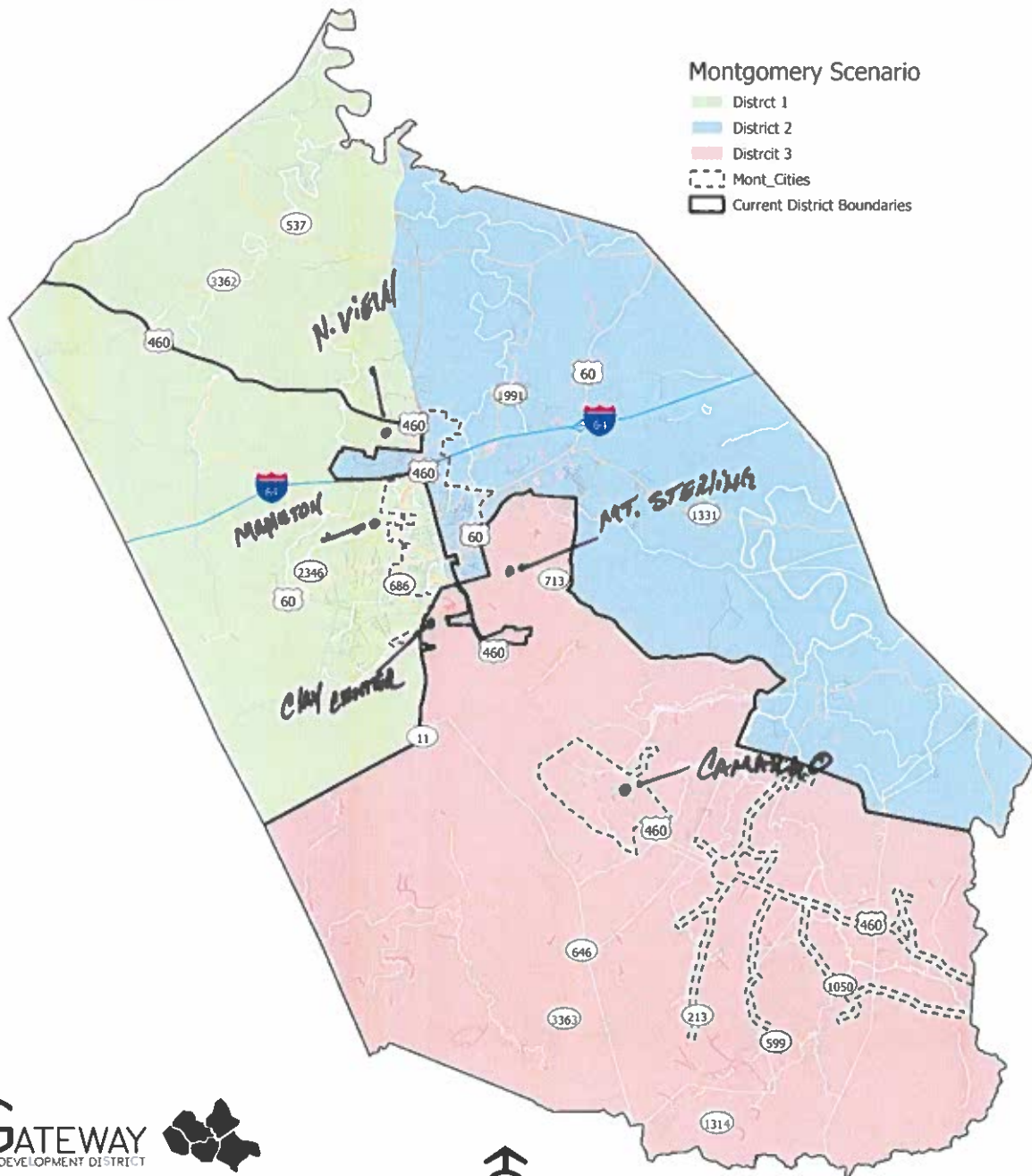
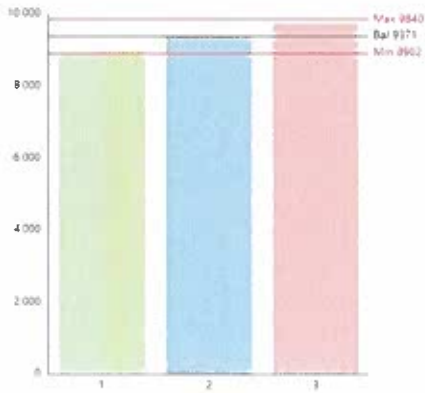








# Montgomery County Commissioner Districts Scenario



All reported information is believed accurate but is not guaranteed. All other information may have been made to ensure the completeness of the information presented. The district boundaries shown are not guaranteed to be complete. It is the responsibility of the user to verify the information shown should be necessary. If you have any questions please contact Gateway Area Development District at 930-930-9300 or www.gatewayad.org.



5 Miles